



QuickPanel*

View



GE Fanuc
Intelligent Platforms

Open and Connected

You deserve to know how well your manufacturing is running. Our Operator Interface Solutions make sure you do it better.

The QuickPanel* View Family

The QuickPanel View bundled visualization solution provides the tools required for today's application needs with a combination of bright touch screen displays, multiple communications options, and Proficy* View – Machine Edition software.



Information Delivery

Acting as the bridge between the enterprise system and the plant floor, QuickPanel View provides information, not just data, that the operators need to run the machines, and that management needs to run their business. The QuickPanel View is a critical link to a well-integrated manufacturing operation.

- Built on Microsoft Windows CE operating system
- Built-in web server accesses data and panels using any standard browser

Scalable

As your information requirements grow, so will your hardware needs. QuickPanel View products are exceedingly scalable to grow with your needs.

- Broad range of display sizes from 6" to 15"
- Choice of Monochrome, Color-STN, or Color-TFT display
- Expandable memory and communications options
- Easy configuration allows you to run the same program on different size models

Seamless Connectivity

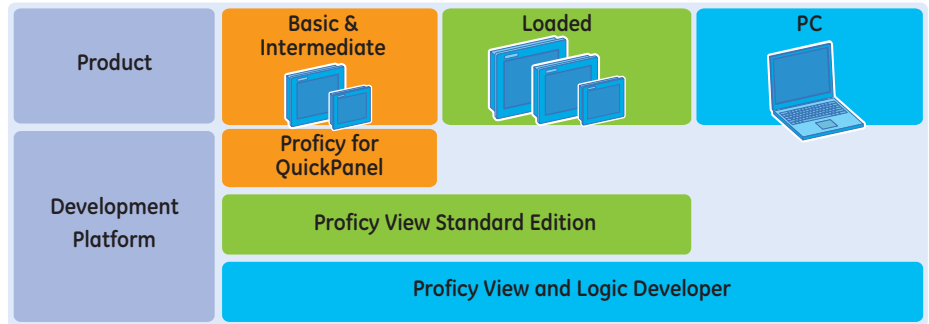
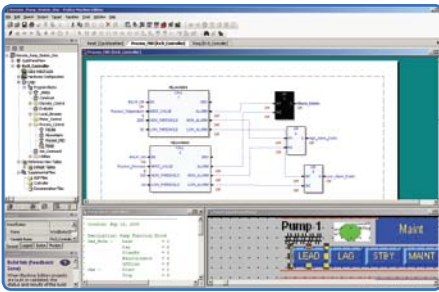
As your need to monitor and collect data grows, you may need to connect to a wide variety of devices. Unless your operator interface has seamless connectivity, you may face delays and headaches. That is why QuickPanel View comes standard with a large number of built-in drivers to connect with the world of automation devices, making it easy to connect to anything.

- Communication drivers over serial and Ethernet
- Communication over fieldbus and vendor specific networks through the addition of a communication expansion card

Other Advantages

We invite you to explore the advantages of QuickPanel View.

- Cost-effective replacement for push buttons and pilot lights
- Data collection, trending, system security and other functions
- Multi-language support
- Migration of applications developed with QuickDesigner*
- Adherence to global standards UL, ATEX, CE



Proficy Machine Edition

GE Fanuc's Proficy View – Machine Edition is an automation software breakthrough for HMI programming in an integrated development environment. The intuitive and comprehensive interface speeds development and reduces costs.

Design Full-Featured Machine-Level Graphics

Proficy Machine Edition includes an intuitive machine level HMI called Proficy View. Specifically designed to address the needs of machine-level operator interface and HMI requirements, it boasts an all-inclusive graphics configuration tool that allows you to place objects within the common object repository – the Toolchest. The graphics tool represents shop floor devices such as PLCs, CNCs, motion controllers, marquees, serial devices, and other machine-level components allowing the user to re-use objects so it is easy for you to develop exactly what you need.

Connect to Anything

Your operator interface hardware should not be closed and unfriendly. Proficy View includes a wide range of PLC/device drivers

and OPC client/server support, and provides remote connectivity and thin client support for diagnostic and data monitoring. Applications can be developed for QuickPanel, QuickPanel View (Windows CE), and Windows 2000/XP based systems. View supports communication protocols for all major PLCs and includes OPC client and server drivers. It also lets you publish your data and graphical panels over the Web to a standard browser.

Make Life Easier

In addition to sharing common development tools, all Proficy Machine Edition components, View, Logic Developer, and Motion Developer, share a common database and common objects across

applications, including logic, scripts, and animation. Once a variable is created, it can easily be used in all other components of the project. Using one programming package instead of many reduces difficult integration and reduces the learning curve.

Building your application on industry standards will also simplify your programming. Combining the best of traditional programming and graphics applications with such powerful open industry-standard technologies as COM/DCOM, ActiveX, OPC, and XML, Proficy Machine Edition provides a smooth migration path to the latest development tools.



QuickPanel View



Loaded QuickPanel View

TYPICAL APPLICATIONS

Medium to large applications where communication to multiple devices from different vendors is required.

Applications using Programmable Automation Controllers, many I/O, where you need integrated control.

FEATURES

- Connectivity: Serial, Ethernet and Fieldbus networks
- View and VB Scripting
- Compact Flash
- Document Viewers (doc, xls, pdf)
- Historian Collector
- Web Publishing
- View and Integrated Control

AVAILABLE SIZES

- 15" TFT-Color
- 12" TFT-Color
- 8" TFT-Color
- 6" TFT-Color
- 6" Mono

	IC754V*L06MTD	IC754V*L06CTD	IC754V*F08CTD	IC754V*F12CTD	IC754V*F15CTD
Display					
Type	6" Mono	6" Color-TFT	8" Color-TFT	12" Color-TFT	15" Color-TFT
Resolution	320 x 240 pixels	320 x 240 pixels	800 x 600 pixels	800 x 600 pixels	1024 x 768 pixels
Size	5.7" (Diagonal)	5.7" (Diagonal)	8.5" (Diagonal)	12.1" (Diagonal)	15.1" (Diagonal)
Memory					
Flash	32 MB	32 MB	64 MB	64 MB	64 MB
DRAM	32 MB	32 MB	64 MB	64 MB	64 MB
Expandable	To 64 MB or 96 MB	To 64 MB or 96 MB	To 96 MB or 128 MB	To 96 MB or 128 MB	To 96 MB or 128 MB
Communications					
Serial: Com #1	RS232/RS485	RS232/RS485	RS232/RS485	RS232/RS485	RS232/RS485
Serial: Com #2	RS232	RS232	RS232	RS232	RS232
Ethernet: LAN #1	10/100 Mbps	10/100 Mbps	10/100 Mbps	10/100 Mbps	10/100 Mbps
Ethernet: LAN #2	None	None	None	10/100 Mbps	10/100 Mbps
Comm. Expansion	GE Fanuc Genius, Data Highway Plus, DeviceNet Slave, and PROFIBUS Slave				
Compact Flash	One, Type 2	One, Type 2	One, Type 2	One, Type 2	One, Type 2
Environmental					
Agencies	UL - Class 1 Div 2 (A, B, C, D), ATEX - Class 1 Zone 2, CE Mark				
Environmental	NEMA 4/12/4x	NEMA 4/12/4x	NEMA 4/12/4x	NEMA 4/12/4x	NEMA 4/12/4x
Panel Cut-Out (W x H x D)	6.14" x 4.86" x 2.76" 158 mm x 126 mm x 70 mm	6.14" x 4.86" x 2.76" 158 mm x 126 mm x 70 mm	8.93" x 7.31" x 2.38" 227 mm x 186 mm x 60 mm	11.88" x 8.96" x 2.37" 302 mm x 228 mm x 60 mm	14.93" x 12.03" x 2.78" 379 mm x 305 mm x 71 mm
Input Voltage	12.0 to 30.0 VDC	12.0 to 30.0 VDC	12.0 to 30.0 VDC	12 VDC @ +/- 20% or 24 VDC @ +/- 20%	12 VDC @ +/- 20% or 24 VDC @ +/- 20%



Intermediate QuickPanel View

TYPICAL APPLICATIONS

Medium sized applications communicating to multiple devices. Applications using Programmable Automation Controllers or Programmable Logic Controllers

FEATURES

- Connectivity: Serial, Ethernet and Fieldbus networks
- View and VB Scripting
- Compact Flash Card
- Historian Collector
- Expandable Memory

AVAILABLE SIZES

- 12" TFT-Color
- 12" Mono
- 8" TFT-Color
- 6" STN-Color
- 6" Mono

	IC754V*106MTD	IC754V*106STD	IC754V*108CTD	IC754V*112MTD	IC754V*112CTD
Display					
Type	6" Mono	6" Color-STN	8" Color-TFT	12" Mono-TFT	12" Color-TFT
Resolution	320 x 240 pixels	320 x 240 pixels	800 x 600 pixels	800 x 600 pixels	800 x 600 pixels
Size	5.7" (Diagonal)	5.7" (Diagonal)	8.5" (Diagonal)	12.1" (Diagonal)	12.1" (Diagonal)
Memory					
Flash	32 MB	32 MB	32 MB	32 MB	32 MB
DRAM	32 MB	32 MB	32 MB	32 MB	32 MB
Expandable	To 64 MB or 96 MB	To 64 MB or 96 MB	To 64 MB or 96 MB	To 64 MB or 96 MB	To 64 MB or 96 MB
Communications					
Serial: Com #1	RS232/RS485	RS232/RS485	RS232/RS485	RS232/RS485	RS232/RS485
Serial: Com #2	None	None	None	None	None
Ethernet: LAN #1	10/100 Mbps	10/100 Mbps	10/100 Mbps	10/100 Mbps	10/100 Mbps
Ethernet: LAN #2	None	None	None	None	None
Comm. Expansion	GE Fanuc Genius, Data Highway Plus, DeviceNet Slave, and PROFIBUS Slave				
Compact Flash	One, Type 2	One, Type 2	One, Type 2	One, Type 2	One, Type 2
Environmental					
Agencies	UL - Class 1 Div 2 (A, B, C, D), ATEX - Class 1 Zone 2, CE Mark				
Environmental	NEMA 4/12/4x	NEMA 4/12/4x	NEMA 4/12/4x	NEMA 4/12/4x	NEMA 4/12/4x
Panel Cut-Out (W x H x D)	6.14" x 4.86" x 2.76" 158 mm x 126 mm x 70 mm	6.14" x 4.86" x 2.76" 158 mm x 126 mm x 70 mm	8.93" x 7.31" x 2.38" 227 mm x 186 mm x 60 mm	11.88" x 8.96" x 2.37" 302 mm x 228 mm x 60 mm	11.88" x 8.96" x 2.37" 302 mm x 228 mm x 60 mm
Input Voltage	12.0 to 30.0 VDC	12.0 to 30.0 VDC	12.0 to 30.0 VDC	12 VDC @ +/- 20% or 24 VDC @ +/- 20%	12 VDC @ +/- 20% or 24 VDC @ +/- 20%



Basic QuickPanel View

TYPICAL APPLICATIONS

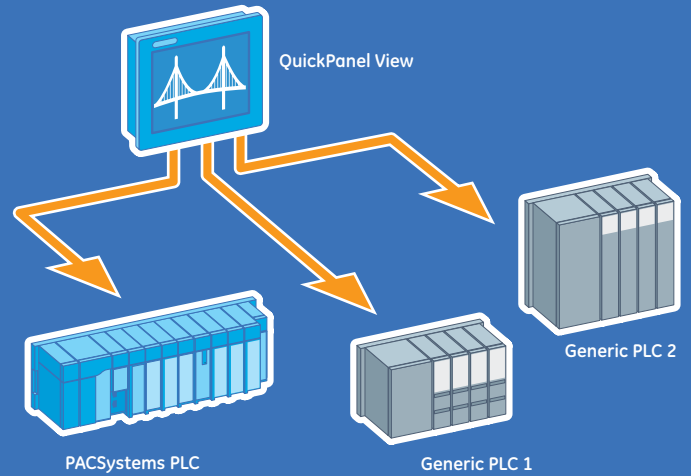
Ideal for small applications. Using point-to-point serial connectivity. QuickDesigner applications.

FEATURES

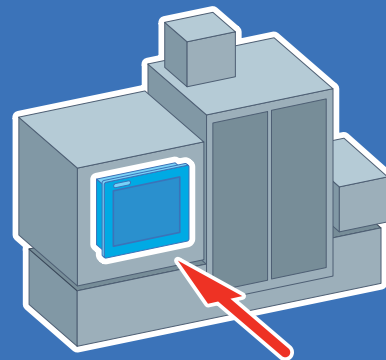
- Serial Interface to PLC
- View Scripting
- View Functionality

	IC754V*B06MTD
Display	
Type	6" Mono
Resolution	320 x 240 pixels
Size	5.7" (Diagonal)
Memory	
Flash	32 MB
DRAM	16 MB
Expandable	No
Communications	
Serial: Com #1	RS232/RS485
Serial: Com #2	None
Ethernet: LAN #1	Download Only
Ethernet: LAN #2	None
Comm. Expansion	None
Compact Flash	None
Environmental	
Agencies	UL - Class 1 Div 2 (A, B, C, D), ATEX - Class 1 Zone 2, CE Mark
Environmental	NEMA 4/12/4x
Panel Cut-Out (W x H x D)	6.14" x 4.86" x 2.03" 158 mm x 126 mm x 52 mm
Input Voltage	12.0 to 30.0 VDC

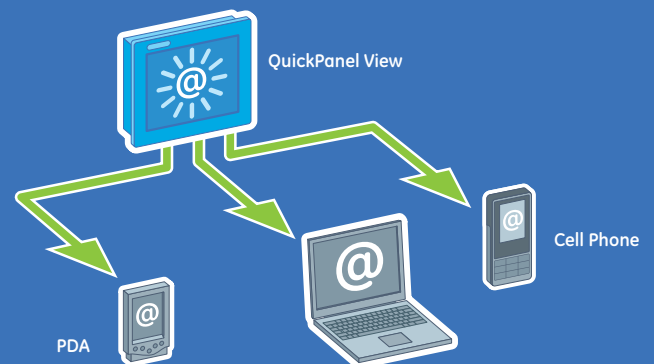
Manage and monitor the process— your way.



Build a bridge to all your hardware

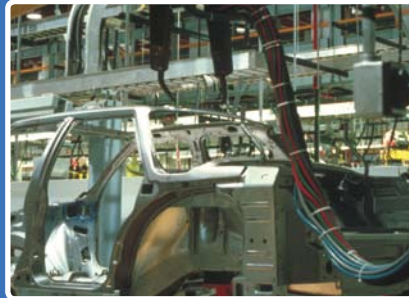


Make recipe changes at your machine



Receive alarms, updates and files via email

Current QuickPanel View Drivers Always Keep You Connected



Nobody likes to be told that they cannot do something. That is why we believe in open communications. QuickPanel View can connect with most any plant-floor device. With built-in drivers, it is simple, quick, and always open.

Every manufacturing environment is different. You cannot count on being able to connect your operator interface in the same way every time. Hardware needs change, systems grow, and you do not want to be limited by a proprietary system that only accepts certain protocols.

Open communication means:

- You simply add a driver to the project when adding new hardware.
- You create a Tag Variable once, instead of twice like some other Operator Interfaces.
- Consistency in configuration from driver to driver
- Access to in-depth diagnostics for troubleshooting

Controller Vendor	Communication Medium	Protocol
Allen-Bradley	Serial	DF1, DH485
	Network	DH+(Requires IC754ABD001)
	Ethernet	ControlLogix Ethernet/IP, TCP/IP
AutomationDirect	Serial	DirectNET, EBC
	Ethernet	ECOM
Cutler-Hammer	Serial	Cutler-Hammer
Fieldbus	DeviceNet – Slave	Requires IC754DVNS01
	PROFIBUS – Slave	Requires IC754PBSS01
GE Fanuc	Serial	CCM, SNP, SNP-X
	Ethernet	SRTP, EGD
	Network	Genius (Requires IC754GEN001)
Honeywell	Ethernet	HC900
Mitsubishi	Serial	Serial, FX
	Ethernet	Ethernet, FX Net
Group Schneider	Serial	Uni-Telway, Square D, Modbus ASCII, Modbus RTU (Solicited and Unsolicited)
	Ethernet	Modbus TCP/IP (Solicited and Unsolicited)
Omron	Serial	Host Link, Process Suite, FINS
	Ethernet	FINS
Siemens	Serial	S7 PPI, S7 MPI, Simatic 505
	Ethernet	Simatic 505, TCP/IP (Solicited and Unsolicited)
SIXNET	Ethernet	EtherTRAK
User Configurable Driver		User Configurable Driver
Yaskawa	Serial	MP
	Ethernet	MP
Yokogawa	Serial	DX
	Ethernet	DX

Cables and Accessories

PLC Manufacturer	PLC Type	Part Number	Description	Part Number	Description	
Allen Bradley	SLC500, 5/01, 5/02, 5/03	HMI-CAB-C83	8-pin RJ-45 Male, RS-422, No simultaneous connection to program port	IC754PCMCIA001	PCMCIA Adaptor for QuickPanel View & Control	
		HMI-CAB-C84	8-pin RJ-45 Male, RS-422, with simultaneous connection to program port	IC754ACC32MEM	Expansion Memory 32 Mbytes	
	SLC5/03, 5/04, ControlLogix	HMI-CAB-C52	9-pin Female, RS-232	IC754ACC64MEM	Expansion Memory 64 Mbytes	
		HMI-CAB-C51	25-pin Female, RS-232	IC754ACC06GAS	Gasket for 6 Inch QuickPanel View & Control	
	PLC-5	HMI-CAB-C53	25-pin Male, RS-232	IC754ACC12GAS	Gasket for 12 Inch QuickPanel View & Control	
		HMI-CAB-C53	25-pin Male, RS-232	IC754ACC15GAS	Gasket for 15 Inch QuickPanel View & Control	
	MicroLogix	HMI-CAB-C106	8-pin Circular DIN, RS-232	IC754ACC06MNT	Mounting Clips & Power Connector for 6 Inch QuickPanel View & Control	
	Data Highway Plus	IC754ABD001	Data Highway Plus Communication Card	IC754ACC12MNT	Mounting Clips & Power Connector for 12 Inch QuickPanel View & Control	
	Automation Direct	DL205 & DL305	HMI-CAB-C86	6-pin Male, RJ-11, RS-232	IC754ACC15MNT	Mounting Clips & Power Connector for 15 Inch QuickPanel View & Control
		DL305 & DL405	HMI-CAB-C53	25-pin Male, RS-232	IC754ACC06BEZ01	Stainless Steel Bezel for 6 Inch Mono & TFT-Color QuickPanel View & Control
Fieldbus	DeviceNet	IC754DVNS01	DeviceNet Slave Communication Card	IC754ACC06BEZ02	Stainless Steel Bezel for 6 Inch STN-Color QuickPanel View	
	PROFIBUS	IC754PBS01	PROFIBUS Slave Communication Card	IC754ACC10BEZ01	Stainless Steel Bezel for 10 Inch Mono QuickPanel View	
GE Fanuc	Series 90 CMM Module	HMI-CAB-C53	25-pin Male, RS-232	IC754ACC12BEZ01	Stainless Steel Bezel for 12 Inch TFT-Color QuickPanel View & Control	
		HMI-CAB-C93	25-pin Male, RS-422	IC754ACC12ADP	Adaptor Kit for 12 Inch QuickPanel View & Control into CELLx Cutout	
	Series 90-30 & 90-70	HMI-CAB-C82	15-pin Male, RS-422			
	Series 90-30	HMI-CAB-C120	6-pin Male RJ-11, RS-232			
	VersaMax CPUs	HMI-CAB-C111	9-pin Male, RS-232			
	VersaMax Nano/Micro	HMI-CAB-C119	8-pin Male RJ-45, RS-232			
	Genius	IC754GEN001	GE Fanuc Genius Communication Card			
Mitsubishi	Series A	HMI-CAB-C53	25-pin Male, RS-232			
		HMI-CAB-C88	9-pin Male, RS-232			
	Series FX	HMI-CAB-C91	25-pin Male, RS-422			
Omron	C200H	HMI-CAB-C53	25-pin Male, RS-232			
	CP1H, CPM2, CJ1, CS1	HMI-CAB-C67	9-pin Male, RS-232			
Siemens	500 Series	HMI-CAB-C53	25-pin Male, RS-232			
	TI545-1102	HMI-CAB-C100	9-pin Female, RS-422			
	305 & 405	HMI-CAB-C53	25-pin Male, RS-232			
	S7-200 PPI	HMI-CAB-C110	9-pin Male, RS-422			
Square D SY/MAX	Model 100 & greater	HMI-CAB-C94	9-pin Male, RS-422			
	984, A, B, X	HMI-CAB-C53	25-pin Male, RS-232			
Telemecanique/Modicon	984 Slot and Compact	HMI-CAB-C58	9-pin Male, RS-232			
		HMI-CAB-C102	8-pin Male RJ-45, RS-232			
	984 Micro	HMI-CAB-C102	8-pin Male RJ-45, RS-232			
	TSX Micro	HMI-CAB-C116	8-pin Male, RS-422			

About GE Fanuc Intelligent Platforms

GE Fanuc Intelligent Platforms, a joint venture between General Electric (NYSE: GE) and FANUC LTD of Japan, is a high-performance technology company and a global provider of hardware, software, services, expertise and experience in automation and embedded computing, with products employed in virtually every industry, including manufacturing automation, defense, automotive, telecommunications, healthcare and aerospace. GE Fanuc Intelligent Platforms is a worldwide company headquartered in Charlottesville, VA and is part of GE Enterprise Solutions. For more information, visit www.gefanuc.com.

GE Fanuc Intelligent Platforms Information Centers

Americas:
1 800 GE FANUC or 434 978 5100

Asia Pacific:
86 21 3222 4555

Europe, Middle East and Africa:
800 1 GE FANUC or 800 1 4332682
or 1 780 401 7717

Europe, Middle East and Africa (CNC):
352 727979 1

Additional Resources

For more information, please visit the GE Fanuc Intelligent Platforms web site at:

www.gefanuc.com

