

# GE Fanuc Intelligent Platforms Operator Interface Products

## 15" QuickPanel™ View & QuickPanel Control Fully Loaded Color TFT

IC754VSF15CTD  
IC754CSF15CTD  
IC754VBF15CTD  
IC754CBF15CTD  
IC754VGF15CTD  
IC754CGF15CTD

Hardware User's Guide  
GFK-2402B

November 2008



# *Warnings, Cautions, and Notes as Used in this Publication*

## Warning

Warning notices are used in this publication to emphasize that hazardous voltages, currents, temperatures, or other conditions that could cause personal injury exist in this equipment or may be associated with its use.

In situations where inattention could cause either personal injury or damage to equipment, a Warning notice is used.

## Caution

Caution notices are used where equipment might be damaged if care is not taken.

## Note

Notes merely call attention to information that is especially significant to understanding and operating the equipment.

This document is based on information available at the time of its publication. While efforts have been made to be accurate, the information contained herein does not purport to cover all details or variations in hardware or software, nor to provide for every possible contingency in connection with installation, operation, or maintenance. Features may be described herein which are not present in all hardware and software systems. GE Fanuc assumes no obligation of notice to holders of this document with respect to changes subsequently made.

GE Fanuc makes no representation or warranty, expressed, implied, or statutory with respect to, and assumes no responsibility for the accuracy, completeness, sufficiency, or usefulness of the information contained herein. No warranties of merchantability or fitness for purpose shall apply.

The following are trademarks of GE Fanuc Intelligent Platforms, Inc.

Alarm Master	Genius	ProLoop	QuickPanel	VersaPoint
CIMPLICITY	Helpmate	PROMACRO	QuickPanel View	VersaPro
CIMPLICITY 90-ADS	Logicmaster	PowerMotion	QuickPanel Control	VuMaster
CIMSTAR	Modelmaster	PowerTRAC	Series Six	Workmaster
Field Control	Motion Mate	Series 90	Series Three	
GENet	PACSystems	Series Five	VersaMax	
	Proficy	Series One		

©Copyright 2005—2008 GE Fanuc Intelligent Platforms, Inc.  
All Rights Reserved

GE Fanuc reserves the right to make improvements to the products described in this publication at any time and without notice.

QuickPanel, QuickPanel View, and QuickPanel Control are trademarks of GE Fanuc in the United States and other countries. Any other trademarks referenced herein are the property of their respective owners and used solely for purposes of identifying compatibility with the products of GE Fanuc.

The 15" QuickPanel View/Control has been tested and found to meet or exceed the requirements of U.S. (47 CFR 15), Canadian (ICES-003), Australian (AS/NZS 3548) and European (EN55022) regulations for Class A digital devices when installed in accordance with guidelines noted in this manual.

**Microsoft® requires the following notes be published according to their additional licensing provisions:**

Users are advised that a maximum of ten (10) computers or other electronic devices may simultaneously connect to, access and use services of the Microsoft Windows® CE Operating system on the QuickPanel View/Control solely for remote access (including connection sharing) The ten connection maximum includes any indirect connections made through 'multiplexing', or other software or hardware which pools or aggregates connections.

Note that the QuickPanel View/Control does not provide any server functionality utilizing Remote Desktop Protocol (RDP) to remotely connected client computers or devices. However, it does support connectivity to a remote Microsoft® Terminal Services server. The server providing these services must meet these restrictions and other Microsoft licensing requirements as applicable.

**Notice Regarding Video Standards**

This product is licensed under one or more video patent portfolio licenses such as and without limitation VC-1 and MPEG4 Part 2 Visual for the personal and non-commercial use of a consumer to:

- (i) Encode video in compliance with the standards licensed under such patent portfolio licenses and/or
- (ii) Decode video that was encoded by a consumer engaged in a personal and non-commercial activity and/or was obtained from a video provider licensed to provide video under such patent portfolio licenses.

Such license extends to this product only and only to the extent of other notices which may be included in this document. The license does not extend to any other product regardless of whether such product is included with this licensed product in a single article. No license is granted or shall be implied for any other use. Additional information may be obtained from MPEG LA, L.L.C. See <http://www.mpegla.com>.

# Notices

---

**The FCC requires the following note to be published according to FCC guidelines:**

This equipment has been tested and found to comply with the limits for a Class A digital device, pursuant to Part 15 of the FCC Rules. These limits are designed to provide reasonable protection against harmful interference when the equipment is operated in a commercial environment. This equipment generates, uses, and can radiate radio frequency energy and, if not installed and used in accordance with the instruction manual, may cause harmful interference to radio communications. Operation of this equipment in a residential area is likely to cause harmful interference in which case the user will be required to correct the interference at his own expense.

Any changes or modifications to the product or installation that are not expressly approved by GE Fanuc could void the user's authority to operate the equipment under FCC rules.

**Industry Canada requires the following note to be published:**

This Class A digital apparatus complies with Canadian ICES-003.

**The following statements are required to appear for Class I Division/Zone 2 Hazardous Locations.**

1. WARNING – EXPLOSION HAZARD – SUBSTITUTION OF COMPONENTS MAY IMPAIR SUITABILITY FOR CLASS 1, DIVISION 2.
2. WARNING - EXPLOSION HAZARD - WHEN IN HAZARDOUS LOCATIONS, TURN OFF POWER BEFORE REPLACING OR WIRING MODULES.
3. WARNING - EXPLOSION HAZARD - DO NOT CONNECT OR DISCONNECT EQUIPMENT UNLESS POWER HAS BEEN SWITCHED OFF OR THE AREA IS KNOWN TO BE NON-HAZARDOUS.

Power, input and output (I/O) wiring must be in accordance with Class I, Division 2 wiring methods, Article 501 10(b) of the National Electric Code, NFPA 70 and in accordance with the authority having jurisdiction.

For a complete list of agency approvals, please refer to Appendix A.

<b>Welcome .....</b>	<b>1-1</b>
Getting Started .....	1-2
Technical Support .....	1-9
Firmware Updates.....	1-10
<b>Overview.....</b>	<b>2-1</b>
QuickPanel View/Control Hardware.....	2-2
QuickPanel View/Control Software.....	2-5
<b>Detailed Operation.....</b>	<b>3-1</b>
Touch Screen Display .....	3-2
Communication Ports.....	3-11
CF Port.....	3-23
Universal Serial Bus (USB).....	3-24
Ethernet.....	3-25
Expansion Bus .....	3-32
DIP Switches.....	3-33
Memory .....	3-35
Other Subsystems .....	3-40
<b>Design Specifications .....</b>	<b>A-1</b>
Physical.....	A-1
DC Power.....	A-1
Display .....	A-2
Front Panel.....	A-2
Touch Screen.....	A-2
CPU.....	A-2
Memory .....	A-3
Memory Expansion Slot.....	A-3
Expansion Ports .....	A-3
Communication Ports.....	A-4
Environmental .....	A-5
Battery.....	A-5

# Contents

---

Calendar/Clock.....	A-5
Agency Approvals .....	A-6
<b>Diagnostics .....</b>	<b>B-1</b>
Power up .....	B-1
Pocket Internet Explorer .....	B-1
Physical Unit .....	B-2

# Chapter 1

## Welcome

---

---

Congratulations on your purchase of a QuickPanel View/Control, the most advanced compact control computer available. The QuickPanel View/Control is available in different configurations to suit your requirements, either as a full-featured HMI, or as a combination of HMI and controller for local and distributed control applications. Equally at home in a networked environment or as a standalone unit, the QuickPanel View/Control is the ideal solution for factory floor HMI and control.

Powered by Microsoft Windows CE.NET™, today's embedded control operating system of choice, the QuickPanel View/Control provides a fast track for application program development. The commonality with other versions of Windows simplifies porting your existing program code. Another benefit of Windows CE is the familiarity of the user interface, shortening the learning curve for operators and developers alike. The availability of third-party application software makes this operating system even more attractive.

The 15" QuickPanel View & QuickPanel Control is an all-in-one microcomputer designed for maximum flexibility. The design, based on an advanced XScale microprocessor, brings together a high-resolution touch-screen operator interface with a variety of I/O options. With many standard ports and expansion busses from which to choose, you can connect to most industrial equipment.

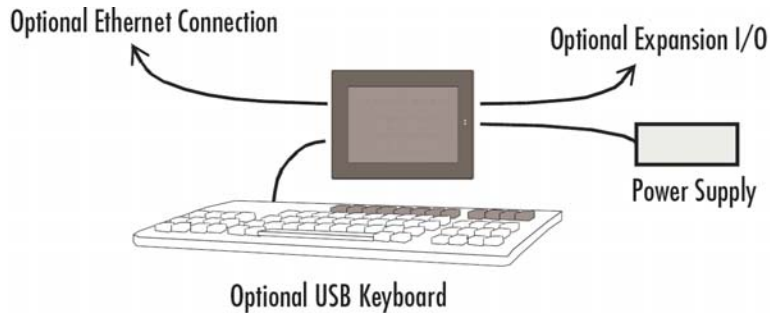
The QuickPanel View/Control is equipped with several memory types to satisfy even the most demanding applications. A 64 MB section of DRAM is split between the operating system, an object store and application memory. Functioning as a virtual hard drive, a 64 MB section of non-volatile FLASH memory is divided between the operating system and persistent storage for application programs. The retentive memory consists of 512 KB of battery-backed SRAM for data storage, ensuring your valuable data will never be lost, even during a power failure.

The many features of the QuickPanel View/Control make it an obvious choice for a world of applications. Your smart choice will provide reliable operation for years to come.

## *Getting Started*

### **Basic Setup**

Your QuickPanel View/Control is shipped ready for use after a few configuration steps. To power up all you need to do is connect a DC power supply via the supplied quick-connect plug. Depending on your application, you may also want to connect and configure optional input devices, communications ports and expansion adapters (see chapter 3).



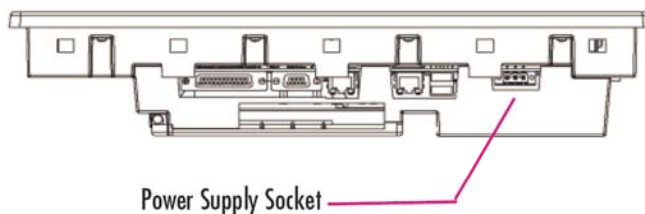
### **Caution**

***Electrical Shock Hazard:*** To avoid personal injury or damage to equipment, ensure that the DC supply is disconnected from power and that the leads are not energized before attaching them to the unit's power supply plug.

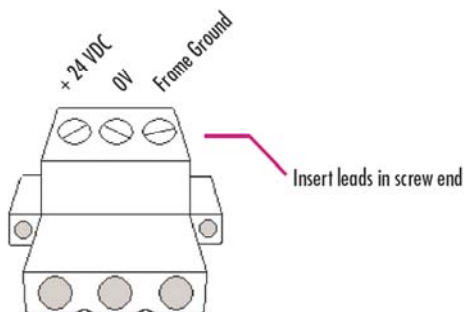
## To connect a DC power supply

1. Using the three screw terminals shown in the following diagram, attach a DC, 48W power supply to the plug supplied with the QuickPanel View/Control (see Appendix A, “Design Specifications” for conductor size and power requirements).
2. Insert the plug into the power supply socket and securely tighten the attaching screws.

### Bottom View



### Power Supply Plug



## QuickPanel View/Control Unit Runtime Setup

To download a Proficy Machine Edition application to a QuickPanel View/Control unit, you must set up a data link between your development workstation and the QuickPanel unit. For more information, see “Communication Ports” in chapter 3 and “Downloading a Machine Edition Project” in the Machine Edition online help.

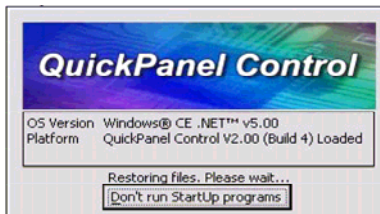
### Startup

When you first start up the QuickPanel View/Control, a few configuration steps are necessary.

#### To start the QuickPanel View/Control






1. Apply DC power to the QuickPanel View/Control.




Once power is applied, the QuickPanel View/Control begins initializing. The first thing to appear on the display is the splash screen.



2. To skip running any programs included in the StartUp folder, tap **Don't run StartUp programs**.

The splash screen disappears automatically after about 5 seconds. The Windows CE desktop then becomes visible.


3. Tap  Start, point to  Settings and then tap  Control Panel.
4. In the Control Panel, double-tap  Display to configure the LCD display.
5. In the Control Panel, double-tap  Stylus to configure the touch screen.

6. In the Control Panel, double-tap  Date and Time to configure the system clock.
7. In the Control Panel, double-tap  Network and Dial-up Connections to configure network settings.
8. To save the settings, run  Backup.

## **Shutdown**

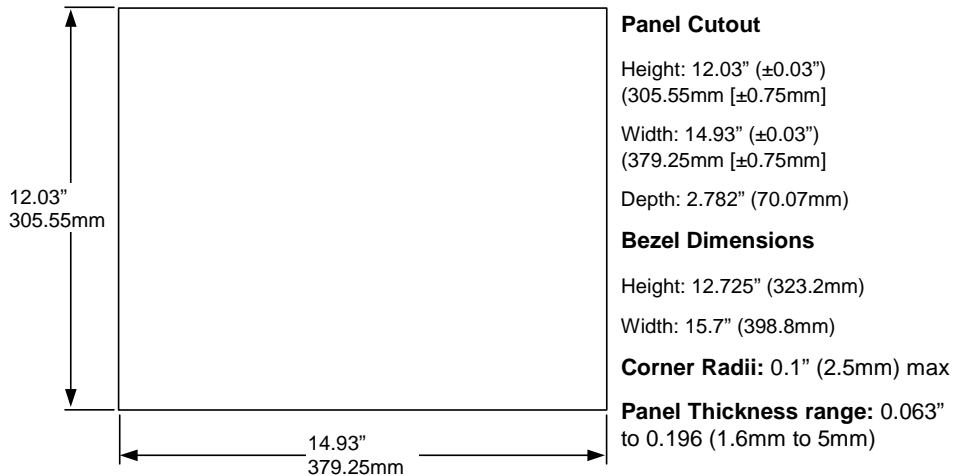
There are no specific dangers associated with a power failure or other unplanned shutdown of the QuickPanel View/Control. In general, programs are retained in FLASH memory and user data can be retained in battery-backed SRAM. Some operating system settings are retained only with user intervention, so in order to carry out a graceful shutdown of the QuickPanel View/Control, we recommend you perform the following procedure.

### ***To shut down the QuickPanel View/Control***

1. Quit any programs that are running and wait for all file operations to complete.
2. If you have not changed operating system settings (e.g., brightness or touch screen sensitivity) or do not want to save the changes, remove AC power from the DC supply.
3. To save changes to operating system settings (e.g., brightness, touch screen sensitivity), run  Backup and then reboot the system. When the Windows CE desktop reappears, remove AC power from the DC supply.

## Panel Cutout

For enclosure mounting, cut an opening in the panel according to the specifications given with the following diagram.



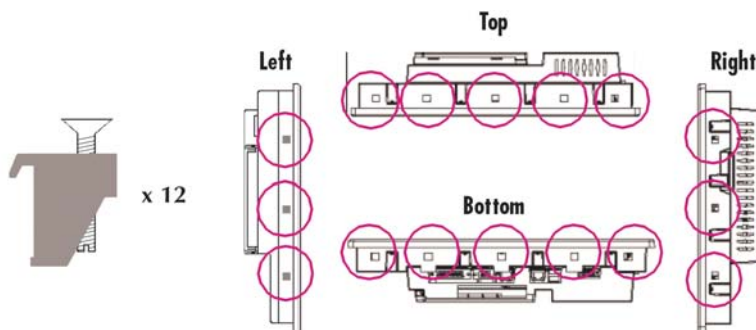
### Notes:

- For compliance to NEMA 4 and 4x qualification, the unit must be mounted in a comparably NEMA rated (IP66 equivalent) panel or enclosure.
- For compliance to ATEX Directive and Class I Zone 2 hazardous locations, the unit must be mounted in an IP66 enclosure. For complete integrity to ATEX it is recommended that the minimum panel thickness be 0.1" (2.54mm).
- For adequate ventilation, allow at least 3 inches of space between adjacent equipment and all sides of the QuickPanel. Ensure that specified conditions of temperature and humidity are not exceeded.
- To avoid gasket degradation, limit repeated insertions or removals of the unit and retightening of the mounting clips. For full protection, always use a fresh gasket. Replacement gaskets may be ordered using part number IC754ACC15GAS.

- In outdoor applications, direct sun exposure may impose increased thermal loads on the QuickPanel leading to excessive temperature increases. Cabinet design and orientation must be carefully considered to avoid exceeding the operational temperature limits. These considerations could include shading for the QuickPanel and its cabinet with awnings or other solar opaque materials, avoiding a due East or West facing of the cabinet, providing ventilation or active cooling of the cabinet, or other methods.

To avoid damage to the unit or associated components, do not fit the unit into this cutout with a CF card inserted in the port, with any cables connected, or with the power plug inserted in the socket.

To secure the QuickPanel View/Control to a panel, use the 16 included mounting clamps. They hook into openings located on the top, bottom, and sides of the housing.

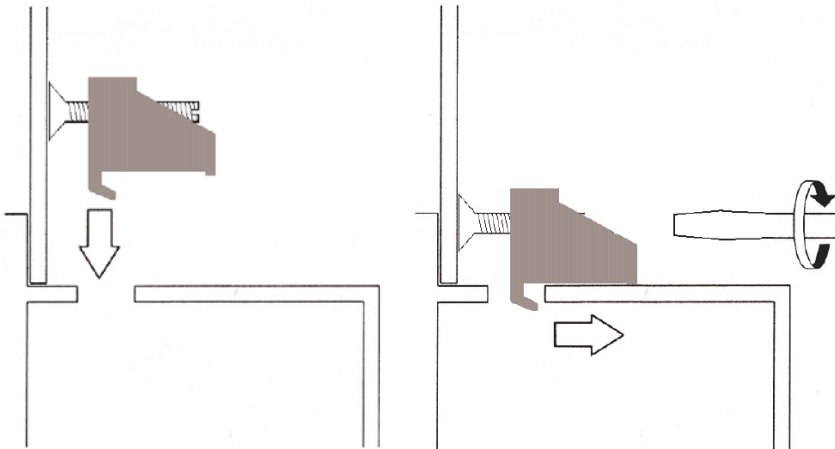


### ***To mount the QuickPanel View/Control in a panel***

1. Insert the unit into the panel cutout (without a CF card in the CF port).
2. Insert the hook of each mounting clamp into the housing openings as shown below.
3. Ensure that the gasket is properly seated in the bezel channel and firmly tighten the clamp screws.

**Note:** The torque range for the mounting clamp screws is 2.6-4.4 inch/lbs (0.3-0.5 Nm)

The mounting clamps hold the unit in place by tension alone. No drilling is required.



Do not damage the gasket attached to the back of the QuickPanel View/Control's bezel. This gasket prevents shock hazards and damage caused by liquids accidentally entering the unit after installation.

Also, limit the number of times you remove and reinstall the unit. Too many installations may cause gasket "set" and degradation of the seal.

## *Technical Support*

### **Contact Automation Support**

#### **Americas**

Online: <http://eservice.gefanuc.com>  
Phone: 1 800 GE FANUC (1-800-433-2682)  
Email: support@gefanuc.com  
Primary language of support: English

#### **EMEA**

Online: <http://eservice.gefanuc.com>  
Phone: +800 1 GEFANUC (+800-1-433-2682)  
Email: support.emea@gefanuc.com  
Primary languages of support: English, French, German, Italian, Czech

#### **Asia Pacific**

Online: <http://eservice.gefanuc.com>  
Phone: +86-400-820-8208  
+86-21-3217-4826 (India, Indonesia & Pakistan)  
Email: support.cn@gefanuc.com (China)  
support.in@gefanuc.com (ROA)  
support.jp@gefanuc.com (Japan)

### **Other Information**

[www.gefanuc.com](http://www.gefanuc.com)

## *Firmware Updates*

Updates to the QuickPanel firmware will be made available through the Support web site <http://support.gefanuc.com>. This will allow updating the unit to the most recent released version of the firmware with the latest feature updates and defects addressed.

# Chapter 2

## Overview

---

---

This chapter provides introductory information on the 15" QuickPanel View & QuickPanel Control hardware and software with descriptive procedures for completing some of the most common tasks you will encounter.

In this chapter:

### **QuickPanel View/Control Hardware**

**2-2**

Provides a layout diagram showing user-accessible controls and indicators, and a block diagram showing module functions.

### **QuickPanel View/Control Software**

**2-5**

Working with Windows CE, working with Pocket Internet Explorer, backing up registry or desktop changes, rebooting the system, using Storage Manager and System Information utilities, using Microsoft file viewers, copying projects to the Flash Card, updating a Machine Edition project from the CF card, emulating a Pocket PC, and using the HTTP File Transfer Utility.

## *QuickPanel View/Control Hardware*

### **Layout Diagram**

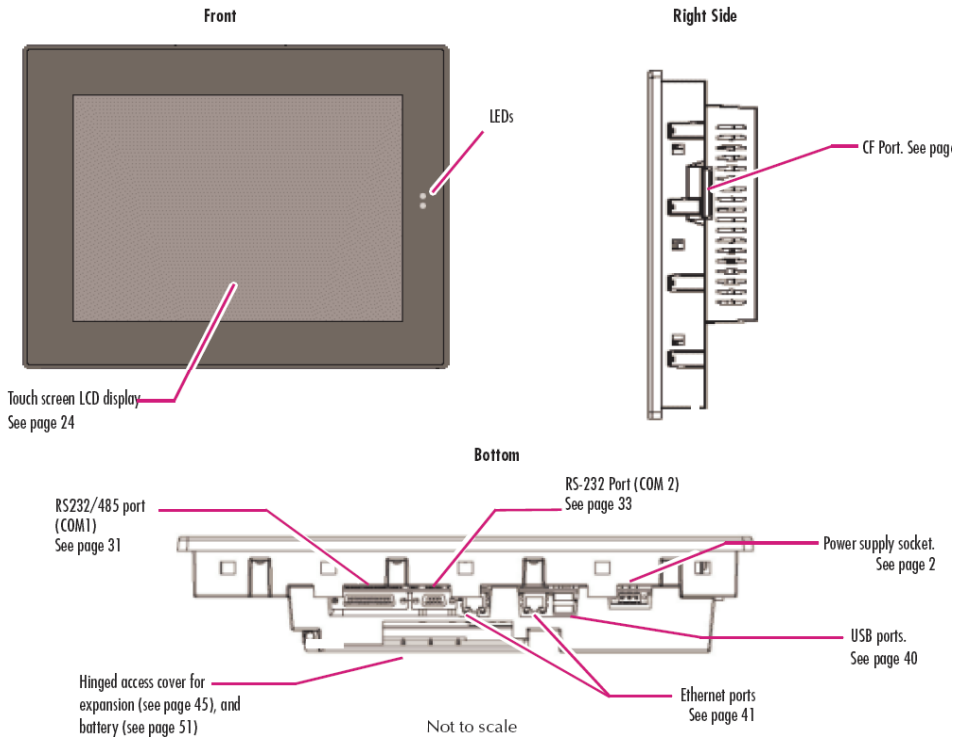
In addition to the primary touch screen interface, the 15" QuickPanel View & QuickPanel Control supports a variety of communication ports including an expansion bus to allow great flexibility in application. The back of the QuickPanel opens allowing access to the expansion bus connector, memory expansion connector, DIP switches and battery. The following diagram shows the physical layout of the QuickPanel View/Control and the locations of ports and connections.

#### **Caution**

**Remove power from the QuickPanel View/Control before opening the back. Working on a “live” unit may result in damage to equipment and injury to personnel. Always use anti-static precautions (i.e. grounded wrist strap) when accessing the interior of the unit. Do not allow conductive material, liquid or solid, to contact the electronics of the QuickPanel.**

The bottom LED is green when power is applied and amber if both backlights fail. The top LED is tricolor (green, red, or amber) and programmable.

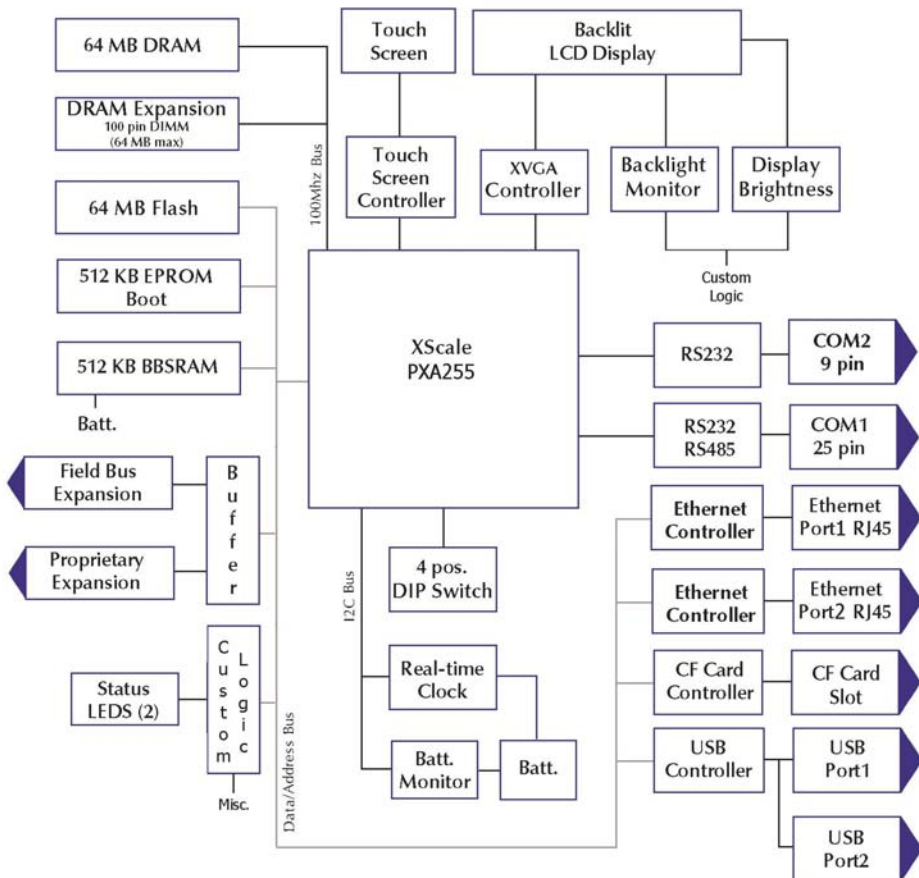
**Note:** Backlights are not field-replaceable.



**Physical Layout of QuickPanel View/Control**

## Block Diagram

The 15" QuickPanel View & QuickPanel Control is based on the XScale PXA255 microprocessor, and employs large-scale integration to provide high performance with a small footprint. The following block diagram illustrates the major functional areas of the QuickPanel View/Control and the interfaces between them.



## *QuickPanel View/Control Software*

### **Windows CE.NET**

Microsoft Windows CE.NET is the operating system for the QuickPanel View/Control. It is a full 32-bit O/S with a graphical user interface. This operating system is finding widespread application in hand-held PCs and embedded controllers, such as the QuickPanel View/Control. The familiar look and feel of Windows CE shortens the learning curve for users having experience with Windows 95/98/NT/2000/ME/XP. From a software developer's perspective, the CE environment is a subset of the WIN32 application programming interface, simplifying the porting of existing software from other versions of Windows.


The QuickPanel View/Control operating system is stored in a 16 MB block of FLASH memory and copied to a block of DRAM for execution. The operating system starts automatically following a power-up or reset of the QuickPanel View/Control.

For more on Windows CE visit




[www.microsoft.com/windows/embedded/windowsce/default.mspx](http://www.microsoft.com/windows/embedded/windowsce/default.mspx).

## Working with Windows CE

Although the main user input device when working with Windows CE is the touch screen, it can often be convenient to use keyboard shortcuts, such as those described in the following table.

<b>Keyboard Shortcut</b>	<b>Action</b>
CTRL+ESC or 	Opens the Windows CE Start menu. Use arrow keys to select a program and ENTER to run it.
ALT+TAB	Starts the Task Manager. Use it to quit unresponsive programs.
CTRL+ALT+=	Starts the touch screen calibration.
SPACEBAR	Equivalent to single-tap.
ENTER	Equivalent to double-tap. In a dialog box, equivalent to OK.
TAB	In a dialog box, select next control.
SHIFT+TAB	In a dialog box, select previous control.
CTRL+TAB	In a tabbed dialog box, open the next tab.
ESC	Close dialog box, discarding changes.
ARROW KEYS	In a dialog box, select controls or items from a list box.

### **To place a program in the Start menu**

1. Start  Windows Explorer.
2. Navigate to the program you want to place in the  Start menu.
3. Tap the program's icon to select it.
4. From the Edit menu, choose Copy.
5. Navigate to the '\Windows\Programs\' folder.
6. From the Edit menu, choose  **Paste Shortcut**.
7. To save the settings, run Backup (see page 2-10).


## Pocket Internet Explorer

Microsoft's Pocket Internet Explorer is a full-featured browser that is fully integrated with the Windows CE operating system. This browser allows you to connect with an Internet service provider, view web pages and download from FTP sites.

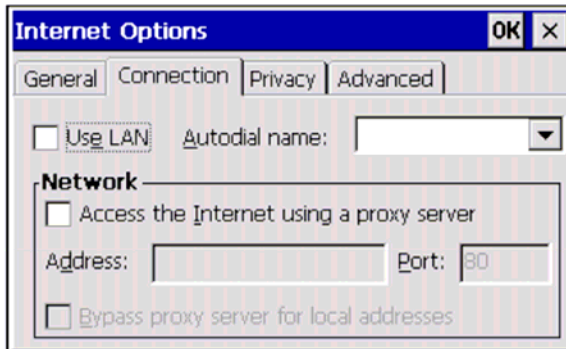
Pocket Internet Explorer supports JScript. Java support can be added from third-party sources. Pocket Internet Explorer does not support VBScript; however, VBScript components are included in the operating system and may be used by third-party applications such as Proficy Machine Edition.


A connection can be established over a dial-up connection (default) or an Ethernet network. The Ethernet or dial-up connection must first be properly configured.

### To configure a dial-up connection


1. Start  Pocket Internet Explorer
2. From the **Tools** menu, choose **Options**.

The **Internet Options** dialog box appears.

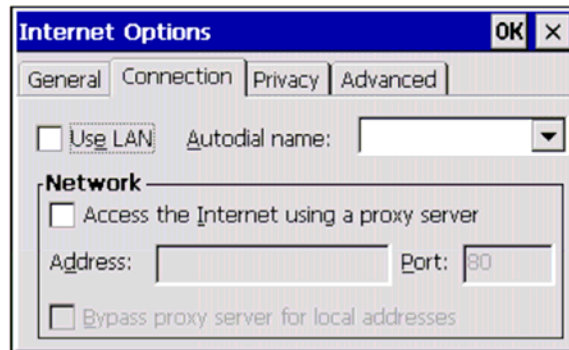



3. On the **Connection** tab, select the dial up connection from the combo list.
4. Tap **OK**.
5. To save the settings, run  **Backup** (see page 2-10).

### ***To configure a LAN Connection***


1. Start  Pocket Internet Explorer
2. From the **Tools** menu, choose **Options**.

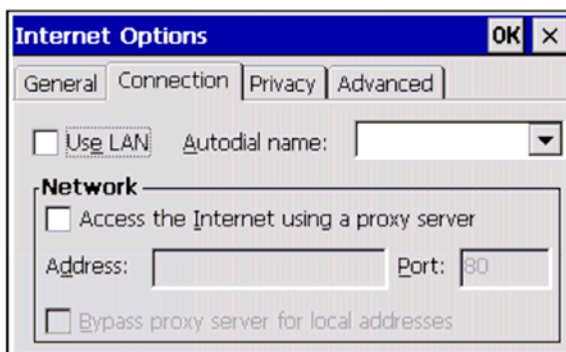
The **Internet Options** dialog box appears.




3. On the Connection tab, select the **Use LAN** check box.
4. Tap **OK**.
5. To save the settings, run  **Backup** (see page 2-10).

### To configure a Proxy server

1. Start  Pocket Internet Explorer.
2. From the **Tools** menu, choose **Options**.  
The **Internet Options** dialog box appears.



3. On the **Connection** tab, select the **Access the Internet using a proxy server** check box.
4. In the **Address** box, type the URL of your proxy server (see your ISP or network administrator).
5. In the **Port** box, type the server's port number for HTTP access.
6. Select the **Bypass Proxy for Local Addresses** check box to connect directly to sites like your intranet.
7. Tap **OK**.
8. To save the settings, run  **Backup** (see page 2-10).


## **Backup**

Backup saves changes that you make to the Windows Registry or Desktop to Flash memory. This utility is required because the QuickPanel View/Control is not battery powered. Specifically, Backup does the following:

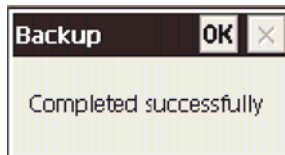
- It stores the Windows CE registry (including any control panel settings) in Flash memory.
- It stores any changes (or additions) made to the 'Windows' subtree of the file system in the user block of FLASH memory.

**Run Backup whenever you make configuration changes to the operating system or installed applications, and prior to shutting down the QuickPanel View/Control.**

### ***To run the Backup program***

1. On the desktop, double-tap  Backup.

The **Backup** dialog box appears.








2. Tap **OK**.

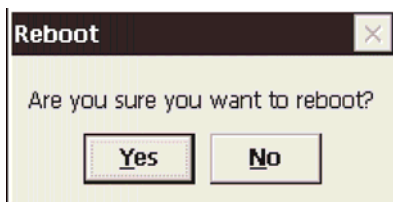
## Reboot

- Reboot performs a controlled and orderly shut down of the Windows CE operating system, then restarts the QuickPanel View/Control. This ensures all open files are closed properly.

### To reboot the system

1. To save changes to system configurations, run  Backup (see page 2-10).
2. Tap  Start, point to  Programs, then the  System folder, and tap  Reboot.

A confirmation dialog box appears.

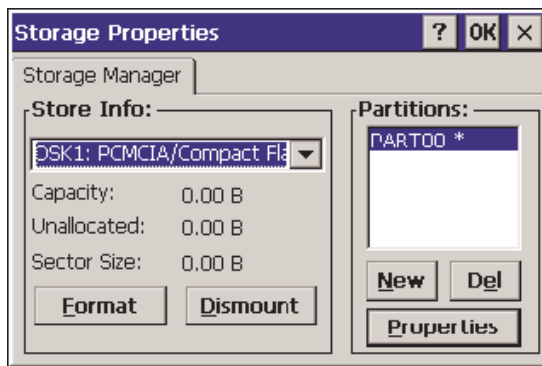


3. Tap "Yes."  
The operating system reboots.

## Storage Manager

Use Storage Manager to repair or format lost or corrupted data volumes. Storage Manager can repair data volumes existing either in Compact Flash (CF), battery-backed SRAM (BBSRAM), or USB Flash Keys (thumb drives). Data volumes existing in the main flash file system of the QuickPanel may not be repaired by Storage Manager.

Storage Manager, accessed from the Control Panels folder, is a Microsoft product for which on-line help is available.



## System Information

System Information is a custom utility that displays a splash screen with the following information:

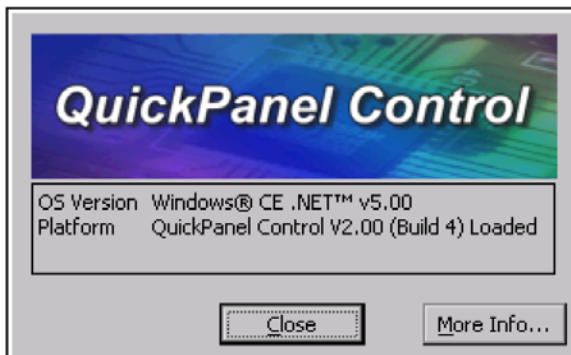
- **Operating System version.** For example, 'Windows CE 5.00'.
- **Platform.** Identifies the host hardware, its version and build number.

Tapping **More Info** on the splash screen opens the Advanced System Information window, which provides information such as hardware version and serial number, CPU type and specifications, etc. This information can be especially useful if you are contacting GE Fanuc Support.


### To run the System Information program

1. On the desktop, double-tap  **System Information**.

The **System Information** splash screen appears.






2. Tap **More Info** to open the **Advanced System Information** window, or tap Close to continue.

Network information alone can be viewed by double-tapping the  **LAN** icon displayed on the taskbar for each connection.

## **Microsoft File Viewers**

Included with Windows CE are applications that enable you to view files in three popular formats: Microsoft® Word, Excel, and Adobe® PDF. Each application provides online help for its use.

### **To access the Microsoft file viewers**

Tap  **Start**, point to  **Programs**, point to  **Microsoft File Viewers**, and then choose one of the following:



**Microsoft Excel Viewer**



**Microsoft PDF Viewer**



**Microsoft Word Viewer**

### **File Viewer Limitations**

#### **Microsoft Excel:**

- Hyperlinks are not supported.
- Data Tables in charts are not supported.
- WordArt is not supported. Plain text will be substituted.
- Surface charts. An image representing an unsupported chart will appear in the chart's location.
- Certain types of 3D charts will be mapped to equivalent 2D charts.
- Supported 3D charts are only shown at a fixed camera angle.
- Vertical text in the worksheet is mapped to 90 degree rotated text.

#### **Microsoft Word:**

- WordArt is not supported.
- Hyperlinks are not supported.
- Some types, styles, and groupings of AutoShapes will not appear.
- Word forms for Text boxes are not supported. Elements from the form may be visible but will not be available for input.

**Microsoft PDF:**

Advanced features, such as PDF forms, encrypted files, CCITTFaxDecode images, clip paths, predictive GZIP decoding, CMYK JPEGs, annotations, and transitions are not supported.

In addition, the Microsoft PDF Viewer operates with the following limitations:


- Poly-polygons are treated as polygons and therefore may have the interiors filled.
- Embedded TrueType fonts are not used. They are mapped to existing fonts already installed on the system
- Colors from unsupported color spaces, such as ICCBased or DeviceN color, may be displayed incorrectly
- Text rotation is only shown in 90 degree increments
- Type 1 fonts are mapped using either the encoding or Unicode mappings, if possible
- Type 3 fonts are not supported, but an attempt is made to map them if a Unicode map exists

***Copy Project to Flash Card***

RestorePCCard is a custom utility for transferring Proficiency™ Machine Edition Projects between compatible QuickPanel View/Control units via CF cards.

**Caution:** Ensure that the copy or update operation is complete (i.e., no busy or wait cursor displays) before disconnecting power.

***To copy a Machine Edition project onto a CF card***

1. Ensure there is a blank CF card in the in the CF port.
2. Double tap the  **Copy Project to Flash Card** icon on the desktop.
3. Tap **Yes** when the **Proceed with Copy to CF Card** confirmation dialog box appears.

The system copies the project onto the blank CF Card.

### ***To update a Machine Edition project***

You can update a Machine Edition application currently stored on the QuickPanel View/Control with a revision stored on a CF Card.

1. Insert the CF Card containing an upgraded version of the Machine Edition project in the CF port.
2. Reboot the machine (see page 2-11).




The QuickPanel View/Control automatically loads the new project from the CF Card, overwriting the old project on the machine.

3. Remove the CF Card from the slot.

### ***Emulate PPC***

Emulate PPC is a utility that allows the QuickPanel to emulate a Pocket PC 2003 during an ActiveSync session, enabling the download of third-party Pocket PC 2003 software.

#### ***To use Emulate PPC during an ActiveSync session***

1. Start  Windows Explorer, double tap  Windows, then double tap  EmulPPC.

The Emulate PPC dialog box appears.

2. Start the ActiveSync session. When installation of third party software is complete, close the dialog box to deactivate Emulate PPC.

## ***HTTP File Transfer Utility***

The HTTP File Transfer Utility (HFTU) is a small, standalone command line program that allows you to send and delete files to and from computers over a network. The HFTU uses the HTTP protocol, so you can even send files to computers over the Internet.

Run the HTTP utility from a command line prompt, from a batch file (.BAT) or as an application call in a script. The HTTP utility is an executable (.EXE) file included in the 15" QuickPanel View & QuickPanel Control's operating system.

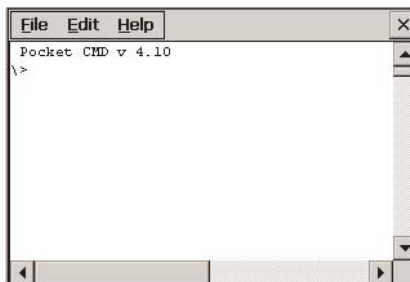
The HTTP utility currently supports two file transfer commands: COPY and DELETE.

**Note:** In order to function, the HTTP File Transfer utility requires both computers to have web servers that support PUT functionality. (Most web servers support PUT, including the Proficy Machine Edition web server installed with the runtimes for View and Logic Developer - PC.) If in doubt, check the documentation for your web server.

### ***To use the HTTP utility***

1. From the **Start** menu, choose Programs, then choose **Command Prompt**.

The **Command Line** editor appears.



2. Type commands as required.

3. Use the following syntax:

#### **HTTPUTIL COPY source destination**

Where “source” is the URL of the source file, and “destination” is the URL of the destination file. For example:

```
HTTPUTIL COPY \MyFile.txt http://MyServer/webfiles/MyFileBACKUP.txt
```

Copies a file called MyFile.txt on drive C: of the local computer to the webfiles folder under the web server at //MyServer. Note that you can rename a file as you copy it.

#### **HTTPUTIL DELETE url**

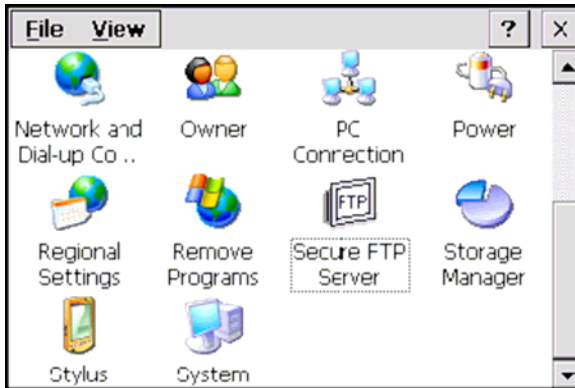
Where “url” is the remote URL of the file you want to delete. This URL must use the “//” or “HTTP://” syntax. For example:

```
HTTPUTIL DELETE http://MyServer/webfiles/MyFileBACKUP.txt
```

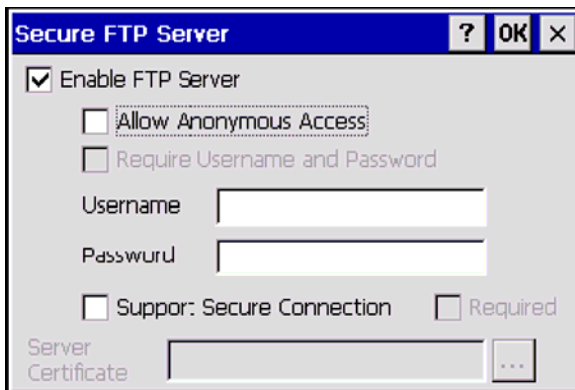
Deletes a file called MyFileBACKUP.txt from the webfiles directory under the web server at HTTP://MyServer.

## FTP Server

The FTP Server included with the QuickPanel View/Control supports both standard (RFC 959) and Explicit FTPS (i.e., FTP/SSL, Auth TLS, TLS-C, RFC-4217). It does not support SFTP or implicit FTPS, which uses different ports and is based on SSH rather than SSL.



All configuration of the FTP server is accomplished with the Secure FTP Server control panel applet. By default, the server is not enabled. Once enabled, a background program will run, waiting for clients to connect. Up to ten connections are supported. Sessions that are idle for five minutes are terminated by the server.



**Note:** To save the settings, run  **Backup** (see page 2-10).

The Server supports:

- Non-secure operation. All information including username, password, and data is transmitted with no encryption and susceptible to packet sniffing and various FTP attacks. This is the default.
- Both secure and non-secure operation. This mode of operation, either secure or non-secure, is determined by the client when it connects. This operation is active when 'Support Secure Connection' is enabled, but 'Required' is not.
- Secure operation only. Secure operation uses encrypted connections for the control connection. The data connections are encrypted or non-encrypted based on the settings of the client. Secure operations also require the server to have a signed server certificate it can use to prove it is the actual machine the client wanted to reach and not an imposter. This mode is active when both 'Support Secure Connection' and 'Required' are enabled.

By default, the server requires a username/password combination to be configured. The server supports one username/password combination to authenticate remote users. There are three modes of authentication operation:

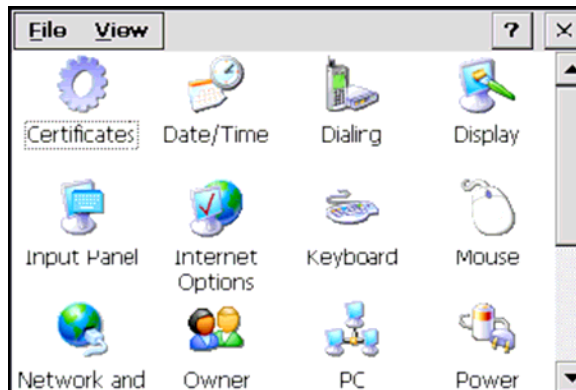
- No support for anonymous login. This is the default.
- Anonymous with no password. This is enabled when 'Allow Anonymous Access' is checked, but 'Require Username and Password' is not checked.
- Anonymous with password requested (but not validated). This is enabled when 'Allow Anonymous Access' and 'Require Username and Password' are checked. This can prevent some types of attacks and is required by some clients.

Once connected, a remote user is logged into the FTP root directory. This is available from the QuickPanel View/Control as \Temp\ftp and is a volatile RAM area. Files placed in this area are not persisted over a power cycle/reboot and use memory from the Storage Memory allocation. Programs running on the QuickPanel have read and write access to the \Temp\ftp directory, but remote users can only read, rename and delete files. This is to protect against the user inadvertently filling up RAM area.

All removable flash devices appear to remote FTP users as directories off of the FTP root directory. PC Flash cards partitions appear as directories such as \PCFlashStorage and USB Flash Keys as directories such as \USBStorage. The names contain no spaces, as FTP commands do not support spaces in filenames. Full access privileges are granted for the client in these folders/devices.

Removable flash device directories are captured when a session is opened and are not changed while the session exists. If you start without a CF card installed, you will have to close your session and login again to see the CF directory. If the CF card existed when you logged in and is removed and inserted, it will still work provided the CF card's device name did not change during reinsertion.

A server certificate is a special type of document that contains information about the server's settings and a chain of electronic signatures to guarantee the document has not been altered. A Server certificate must be chosen from the certificates available in the QuickPanel View/Control Secure FTP Server control panel applet.



The certificate itself is imported with the Certificates control panel applet. The main requirements of the certificate are that it must have the server authentication key usage attribute set and the name of the certificate should match the name used to connect to the FTP server (which could be the IP address of the server).

Certificates can either be purchased from an online vendor and imported into the QuickPanel View/Control, or a self-signed certificate can be

generated from the QuickPanel View/Control. The benefit of a purchased certificate is that any user that has the root certificate used by the online vendor can determine the certificate is valid without the need for any additional information. A self-signed certificate is only known to be valid by clients that have added the certificate to their trusted list. Users can still access a server using a self-signed certificate, but they lose the ability to verify that no one is operating as an imposter somewhere on the network between them and the server.

### ***To create a self-signed certificate***

- 1. Open a command prompt window by selecting the Start menu, selecting Programs, then Command Prompt.**
- 2. From the command prompt, type “genslfcert CN=<unique identifier>”.**

You may specify a unique identifier of your choice, such as machine name, machine location, or IP address in place of unique identifier.

- 3. A self-signed certificate is created in the My Certificates section of the certificates Control Panel.**

This will create a self-signed certificate in the My Certificates section of the certificates control panel and a SelfSigned.cer file in My Computer which can be transferred to FTP Clients as a trusted source. Certificates may be managed through snap-in's to the Microsoft® Management Console or other third party management consoles.

A Backup should be performed after configuring the FTP server and/or creating the self-signed certificate.

### ***To install a certificate on an FTP Client***

1. Double click the certificate. Select the **General** tab.  
The Certificate properties are displayed.
2. Click the **Install Certificate** button.  
The Certificate Import Wizard appears.
3. Click **Next** to continue.  
The Certificate Store screen appears.
4. Specify whether Windows should place the certificate in a certificate store or select another location. Click **Next** to continue.  
The Completing the Certificate Import Wizard screen appears.
5. Click **Finish** to complete the installation of the certificate.  
The Security Warning message appears. This message informs you Windows will automatically trust any certificate issued by this Certification Authority.
6. Click **Yes** to allow Windows to trust any certificate issued by this Certification Authority.



# Chapter 3

## *Detailed Operation*

---

---

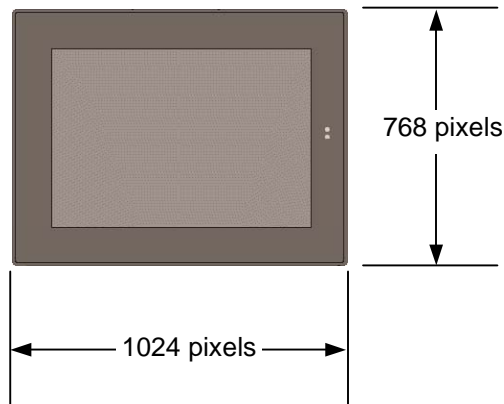
<b>Touch Screen Display</b>	<b>3-2</b>
Adjusting the display brightness, configuring backlight auto turn off, calibrating the touch screen and setting the double-tap sensitivity.	
<b>Keyboard</b>	<b>3-8</b>
Using an optional external keyboard and displaying the Soft Input Panel.	
<b>Communication Ports</b>	<b>3-11</b>
Description and pin assignments for the COM1 and COM2 serial ports. Cabling. Working with serial COM ports.	
<b>CF Port</b>	<b>3-23</b>
Using the compact flash (CF) port.	
<b>Universal Serial Bus (USB)</b>	<b>3-24</b>
Using the USB port.	
<b>Ethernet</b>	<b>3-25</b>
Setting an IP address. Setting up access to a Windows network. Accessing a remote resource on a Windows network.	
<b>Expansion Bus</b>	<b>3-32</b>
Using the expansion bus to connect optional modules.	
<b>DIP Switches</b>	<b>3-33</b>
Configuring startup behavior	
<b>Memory</b>	<b>3-35</b>
Adding Flash memory with a CF Card, changing the DRAM memory allocation, installing additional DRAM.	
<b>Other Subsystems</b>	<b>3-40</b>
Accessing the Power Properties control panel, removing the internal battery, setting the real-time clock and displaying the time on the taskbar.	

## Touch Screen Display


The QuickPanel View/Control has an integrated flat-panel display providing 16 bits per pixel for a total of 65,536 colors. The backlit 15-inch diagonal panel employs TFT technology to provide a bright operator interface.

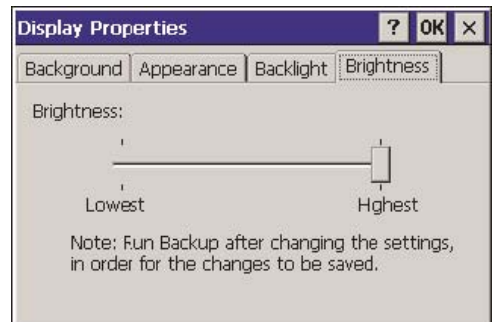
The display supports a resolution of 1024 by 768 pixels.

A backlight time is featured on all models. You can extend the backlight life by turning off the backlight automatically.




### To adjust the display brightness

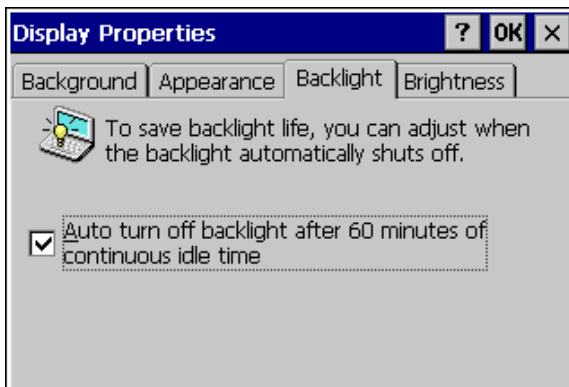
1. In the Control Panel, double-tap  **Display** and choose the **Brightness** tab. The Brightness dialog box appears.
2. Drag the Brightness slider between Lowest and Highest.
3. Tap OK to exit the control panel.
4. To save the settings, run the Backup utility as described in chapter 2.




## To configure back light auto turn off

1. In the Control Panel, double-tap  **Display** and choose the **Backlight** tab.

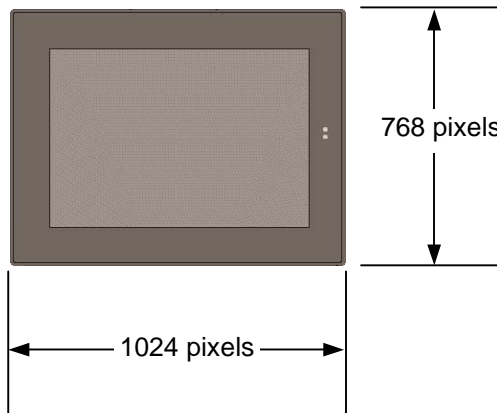
The **Backlight** dialog box appears.




2. Select Auto turn off backlight while on external power.
3. Tap **OK** to exit the control panel.
4. To save the settings, run the  **Backup** utility as described in chapter 2.

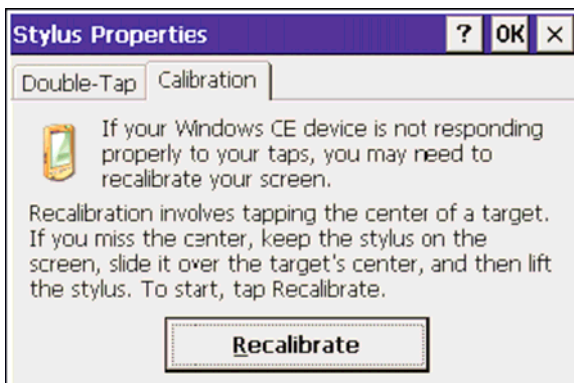
## Touch Screen

The QuickPanel View/Control display is coupled to a resistive touch panel with 12bit resolution. When the QuickPanel View/Control is properly calibrated, this translates into a grid of touch cells on the face of the display. A blunt stylus should always be used during calibration for greatest accuracy. During normal operation use of a finger or a soft and pliable, blunt object is recommended to preserve the maximum reliability of the touch screen.



### *To calibrate the touch screen*

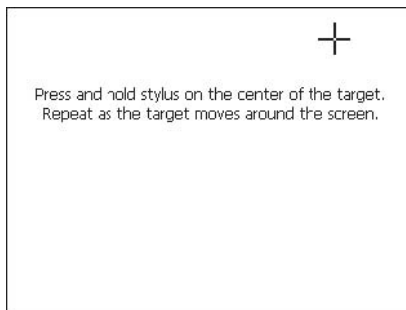
1. In the Control Panel, double-tap  **Stylus**.  
The **Stylus Properties** dialog box appears.



2. Choose the Calibration tab
3. Tap the Recalibrate button.

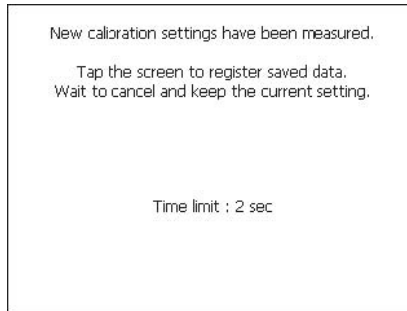
A cross hair target is displayed.


**Note:** For greatest accuracy, it is recommended that you use a blunt stylus when calibrating the touch screen.




4. Follow the directions given to calibrate the touch screen.

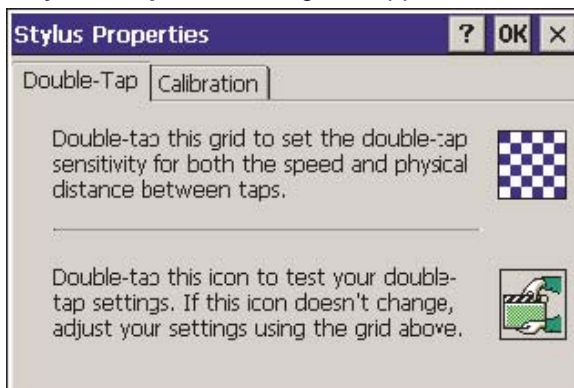
5. Tap the screen to preserve the new setting or wait out the time limit to revert to previous settings.



6. To save the settings, run the  Backup utility as described in chapter 2.

### ***To set the double-tap sensitivity***

1. In the Control Panel, double-tap  Stylus.  
The **Stylus Properties** dialog box appears.



2. Choose the Double-Tap tab.
3. Double-tap the grid to enter a setting.
4. Double-tap the test icon to check the setting.

If the test icon doesn't change when you double-tap it, double-tap the grid again.

5. Tap OK to finish.
6. To save the settings, run the  **Backup** utility as described in chapter 2.

## Keyboard

The QuickPanel View/Control can be configured to use either or both a hardware keyboard and a software emulation keyboard as operator data input devices. Typically, an external hardware keyboard is used when in a development mode, while the included Soft Input Panel is more applicable in an operational environment.

### **External Keyboard (optional)**

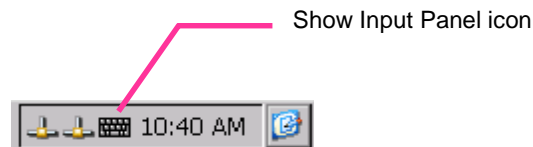
Any USB keyboard compatible with the QuickPanel View/Control can be used as an input device for the unit. The USB driver for the keyboard is included with the operating system and no setup is required. To use an external keyboard, simply plug and play.

A list of compatible devices (keyboards, USB mice, compact flash cards, etc.) may be found by visiting the GE Fanuc Support page, accessible from <http://globalcare.gefanuc.com>.

### **Soft Input Panel**

The Soft Input Panel (SIP) is a touch screen version of a standard keyboard, which can be used in place of a standard hardware keyboard.

An icon in the system tray lets you view or hide the SIP.



### **To show/hide the Soft Input Panel**

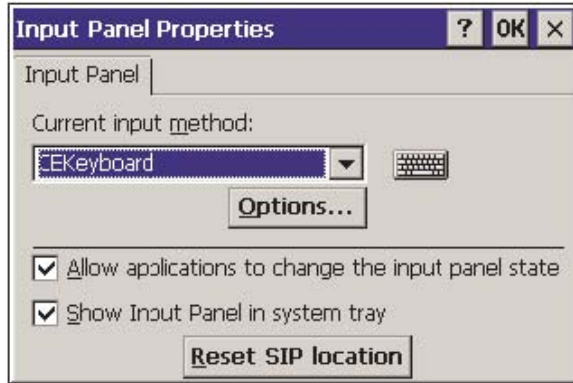
On the system tray of the task bar, double-tap the icon. The Soft Input Panel appears/disappears.


**Note:** When the SIP is visible, it can be dragged around the screen by its title bar to reveal different parts of the screen that would be obstructed from view by the SIP.

### To display the Soft Input Panel icon in the system tray

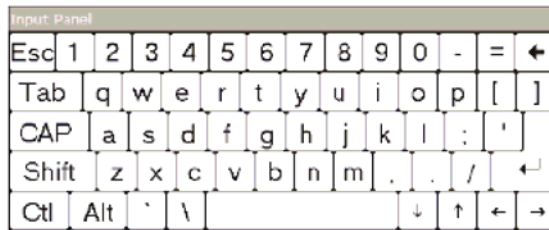
1. In the Control Panel, double-tap Input Panel.

The **Input Panel Properties** dialog box appears.



2. Select the Allow applications to change the input panel state check box.
3. Select or clear the Show Input Panel in system tray check box.
4. Tap OK.
5. To save the settings, run  the Backup utility as described in chapter 2.

The Soft Input Panel provides a standard QWERTY key layout with numeric keys at the top row as illustrated in the following picture.



#### Lower Case

Upper case characters are accessed by pressing the SHIFT key once. This is equivalent to holding down the SHIFT key on a conventional keyboard.

The SHIFT key is active while the next key is pressed then reverts back to its unselected state. The CAP key does the same thing as SHIFT but does not revert to lower case after another key is pressed. Pressing the CAP key causes the Soft Input Panel to remain in upper case mode. The CTRL and ALT keys behave the same as the SHIFT key.



Upper Case

### ***To reset the SIP Location***

If you accidentally drop the SIP off screen and can't drag it back on screen, complete the following steps to reset the SIP to the center of the screen.

1. In the Control Panel, double-tap **Input Panel**.

The **Input Panel Properties** dialog box, shown above, appears.

2. Click **Reset SIP location**.

### ***External Mouse (optional)***

Any USB mouse compatible with the QuickPanel View/Control can be used as an input device for the unit. The USB driver for the mouse is included with the operating system and no setup is required. To use an external mouse, simply plug it into the appropriate port.

A list of mice (and other devices) that have been tested and are compatible can be found by visiting <http://globalcare.gefanuc.com/>. In the "Technical Resources" "Browse by Product" section of the page, choose the *Operator Interface* Product Category, and the *QuickPanel View* Product Name.

## Communication Ports

The QuickPanel View/Control has two serial data communication ports, COM1 and COM2.

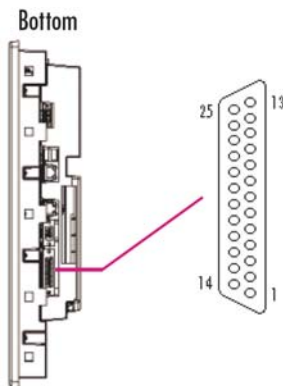
### COM1- Serial

The COM1 port is a general purpose bidirectional serial data channel that supports the EIA232C and EIA485 electrical standards. The COM1 port can be accessed and configured:

- as a direct or dial-up remote networking connection.
- as the port used by a terminal session (modem link only).
- from a user-created application utility.

A connection can be configured to reside on a network supporting a TCP/IP protocol.

A DB25S (female) connector, mounted on the bottom of the enclosure, provides standard signals as described in the following table.



1 GND - Frame Ground	14 VCC -5VDC, 0.5A
2 TX - (EIA232C)	15 TXB (EIA485)
3 RX - (EIA232C)	16 RXB (EIA485)
4 RTS - (EIA232C)	17 n/c
5 CTS -(EIA232C)	18 CSB (EIA485)
6 DSR - (EIA232C)	19 ERB (EIA485)
7 SG - Signal Ground	20 DTR (EIA232C)
8 DCD - (EIA232C)	21 CSA (EIA485)
9 TRMRXB (EIA485)	22 ERA (EIA485)
10 RXA (EIA485)	23 n/c
11 TXA (EIA485)	24 n/c
12 n/c	25 n/c
13 n/c	

**Note:** Pin 14 is fused with a field-replaceable, 1.0A fast-blow fuse.

### ***Recommended Cabling for TIA/EIA422 or TIA/EIA485***

The COM1 port on the QuickPanel View/QuickPanel Control provides connections to devices that support either TIA/EIA422 or TIA/EIA485. These electrical standards specify a differential signaling technique that provides high data rates, long distances and good noise rejection. The standards do not address signal encoding (protocol), connectors, or cabling. However, certain characteristics these devices' interfaces should be considered to ensure reliable connections.

<b>Connections</b>	Connect nodes in a daisy chain fashion. Do not connect in other arrangements, especially "star." The standards do not specify the maximum number of nodes or devices that can be connected to a TIA/EIA 422 or 485 network. Instead, the standards limit the number of electrical connections by specifying that a maximum of 32 unit loads may be connected. The QuickPanel View or QuickPanel Control presents one unit load.
<b>Interconnect media</b>	Always use twisted pair cabling and group complimentary signals into conductor pairs; TXA with TXB, for example. Use a cable with a characteristic impedance of 100 ohms to 120 ohms. A wire gauge of 24 AWG is commonly used. Maximum cable length is 4,000' (1,219.2m), but may be less due to cable impedance, connection quality, data rates, and other factors.
<b>Termination</b>	Always provide proper termination at each end of the 422/485 network. The QuickPanel View provides built-in termination resistance when pin #9 (TRMRXB) is connected to pin #10 (RXA). <b><i>Do not terminate every node. Only terminate the end nodes.</i></b>

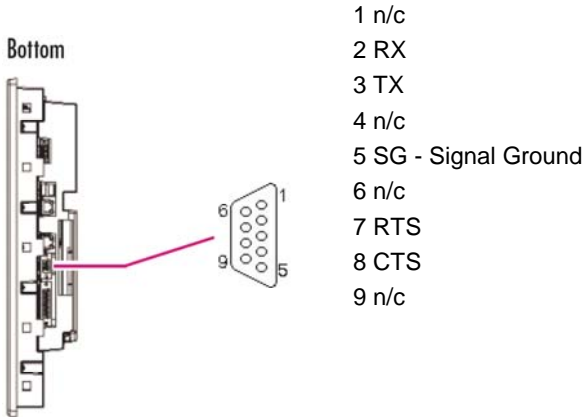
<b>Grounding</b>	<p>A signal return path between transmitting and receiving devices must be provided. This return path is separate from the Rx and Tx data lines and the other 422/485 signals supported by the QuickPanel View/QuickPanel Control, and may be provided by a separate conductor in the cable. Connect both ends of the signal return conductor to Signal Ground (pin #7). Shielding or use of a twisted pair for this connection is not necessary.</p> <p>For installations where all devices are in the same cabinet and have the same ground potential between devices, connecting Signal Ground between all the devices on the 422/485 network is adequate to ensure proper voltage levels at the devices.</p> <p>However, if there is a difference in ground potential between devices, such as when the devices are in widely separated cabinets, signal grounds on a 422/485 network should not be tied together. The cable shield and signal ground should be connected together at only one device, closest to the earth ground connection.</p> <p>The signal and frame grounds of the QuickPanel View/QuickPanel Control are capacitively coupled, but in some devices these ground references are connected together. Connect Signal Ground (pin #7) to Frame Ground (pin #1) and then to earth ground on the QuickPanel View/QuickPanel Control only in the circumstance where the other devices separate their signal and frame grounds and the QuickPanel View/QuickPanel Control is the only device with frame and signal ground connected to earth ground.</p>
<b>Shielding</b>	<p>Shielded cable is required for compliance with CE Mark and FCC requirements. The cable shield should be connected to the metal connector shell or by pin 1 of the QuickPanel 25-pin serial connector. Shield and signal ground (pin 7 of the 25pin connector or pin 5 of the 9-pin serial connector) should not be connected directly together.</p>

**Caution**

**Do not connect Signal Ground (pin #7) to Frame Ground (pin #1) on the QuickPanel View/QuickPanel Control, except in the specific and limited circumstances noted in the Grounding section above.**

## COM2 - Serial

The COM2 port is a general-purpose bidirectional serial data channel that supports the EIA232C electrical standards. A DB9P (male) connector, mounted on the bottom of the enclosure, provides standard signals as described in the following table.



### Shielding

Shielded cable is required for compliance with CE Mark and FCC requirements. The cable shield should be connected to the metal connector shell. Shield and signal ground (pin 5 of the 9-pin serial connector) should not be connected directly together.

## Working with COM ports

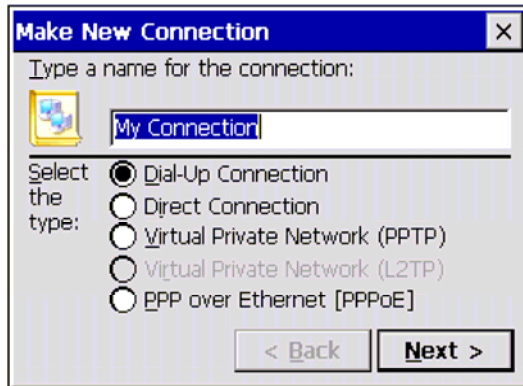
### To add a new remote networking connection

1. From the Start menu, tap Settings and then Network and Dial-up Connections.

The **Connection** window appears.

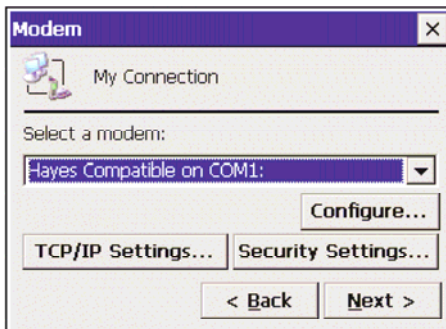
2. Double-tap Make New Connection.

The **Make New Connection** window appears.



3. Type a name for the new connection.
4. Choose a connection type. If you are configuring a modem, choose **Dial-Up Connection**. If you have a device, select **Direct Connection**.
5. Tap **Next**.

The **Modem** or **Device** dialog box appears, depending on the connection type.

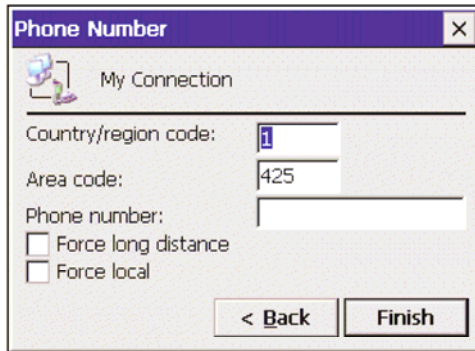


or



6. From the list, choose the device or modem you want to use. (If a serial CF card is inserted, it is available in the device list.)  
You can **Configure** your device or **TCP/IP Settings** at this time if you wish.
7. Tap **Finish** for direct connection (Device dialog box) or **Next** for dial-up (Modem dialog box).

If you are adding a dial-up connection the following dialog box appears.



8. Type the destination **Country/region code**, **Area code**, and **Phone number** in the appropriate boxes.
9. Select or clear the **Force Long Distance** or **Force Local** check boxes.
10. Tap **Finish**.

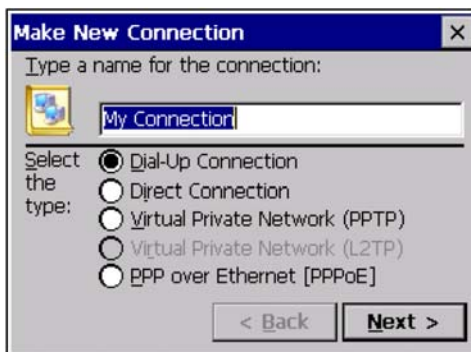
### To add a virtual private network or PPP over Ethernet

1. From the  Start menu, tap  Settings and then  Network and Dial-up Connections.

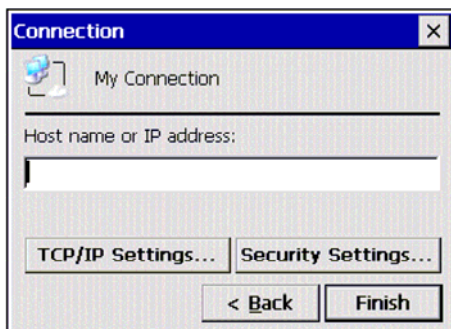
The **Connection** window appears.

2. Double-tap  Make New Connection.

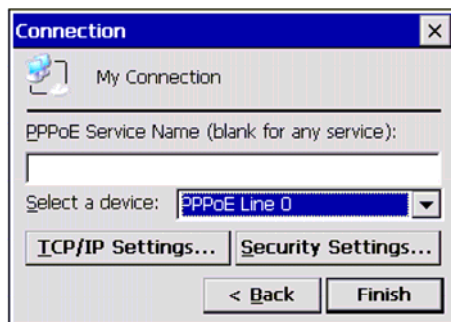
The **Make New Connection** window appears.



3. Type a name for the new connection.
4. Choose a connection type. Select **Virtual Private Network** to configure a VPN connection. Select **PPP over Ethernet** for a PPPoE connection.
5. Tap **Next**. The **VPN** or **PPPoE** Connection window appears, depending on the connection type.



or



6. Enter the Host Name or IP address for a VPN connection, or a PPPoE Service Name for a PPPoE connection.

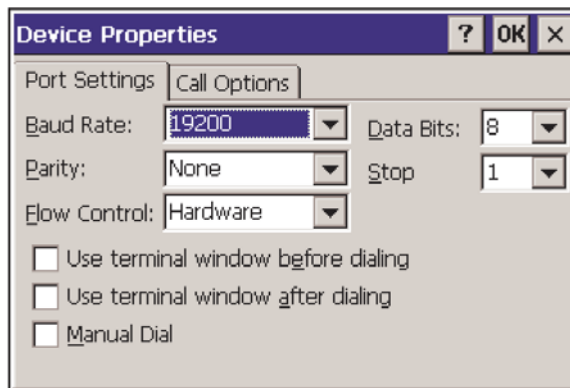
You can configure your **TCP/IP Settings** at this time if you wish.

7. Tap **Finish**.

### ***To change the default device properties***

1. From either the Device or Modem dialog box, tap **Configure**.

The **Device Properties** dialog box appears.

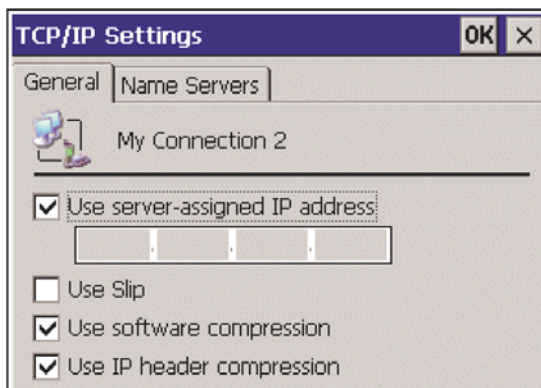


2. In the Port Settings tab, choose settings for all connection preferences.
3. If the connection is for terminal emulation, select or clear the terminal-related check boxes.



You can use the QuickPanel View/Control to emulate a terminal attached via a modem link (Hayes compatible) to COM1. A terminal emulation definition is added as a unique session.

### ***To change the default TCP/IP settings***

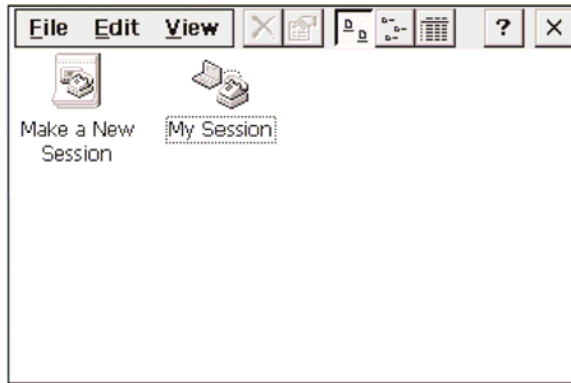
1. Obtain correct TCP/IP settings from your network administrator.
2. From either the **Device, Modem, PPPoE Connection, or VPN Connection** dialog box, tap **TCP/IP Settings**.  
The **TCP/IP Settings** dialog box appears.
3. Clear the Use server-assigned IP address check box.
4. Enter the TCP/IP settings from your network administrator and then click OK.



### To add a terminal session

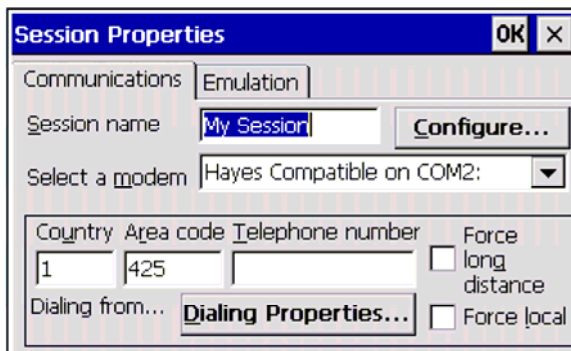
1. From the  **Start** menu, tap  Programs, then Communication, and then tap Terminal.

The Terminal window appears.



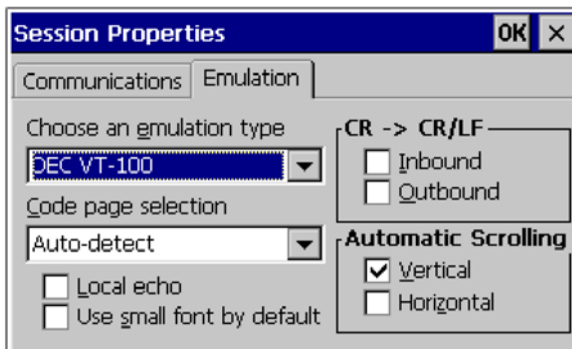
2. Double tap  Make a New Session.


The **Session Properties** dialog box (**Communications** tab) appears.



3. In the **Session Name** box, type a name for your session.
4. Enter the **Country Code**, **Area Code** and **Telephone** number of the remote modem you will connect to.

5. Tap the **Emulation** tab and choose an emulation type (DEC-VT-100 or TTY (Generic)).

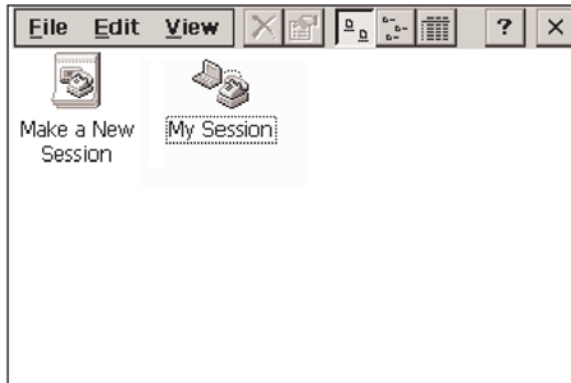


6. From the **Code page** selection box, select the coding type to employ.
7. Select the **Inbound** and /or **Outbound** check boxes to add LF characters to each CR.
8. Select the **Vertical** and/or **Horizontal** check boxes to specify automatic scrolling.
9. Tap OK.
10. The new session is added to the  Session window. To save the settings, run the **Backup** utility as described in chapter 2.

### ***To start a terminal session***

1. From the  Start menu, tap  Programs, then Communication, and choose Terminal.

The **Terminal** window appears.



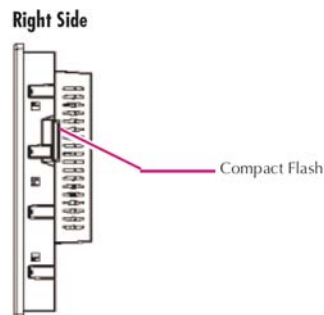
2. Double-tap the session you want.

## CF Port

To enhance the QuickPanel View/Control's capabilities with additional flash memory, the unit is equipped with a CF (Compact Flash) Type 2 port on its side.

A CF card is inserted in this port with the card's front facing the back of the unit (the narrow side slot on the card should be toward the bottom).

**Note:** For full protection from electrostatic discharge, peel off the paper label on the side of the CF card facing the bezel to allow contact between the card and the internal frame ground contacts on the CF connector.



The card should slide in easily—to avoid damage, do not force it.

The Copy Project to Flash Card utility, described in chapter 2 lets you transfer Proficy Machine Edition projects between QuickPanel View/Control units via CF Cards.

No Compact Flash cards are supplied with the QuickPanel View/Control. A list of cards (and other devices) that have been tested and are compatible can be found by visiting <http://globalcare.gefanuc.com>, then select the Operator Interface category, then select the QuickPanel View product name.

The CF port in the 15" QuickPanel View/Control supports both 3.3v CF cards and 5v CF cards.

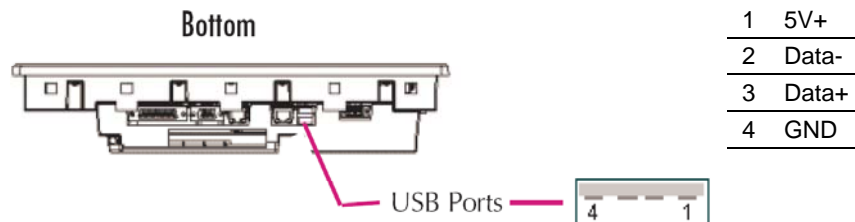
### Caution

**Do not remove power while the system is writing to the CF card, such as when copying a Proficy Machine Edition project. Removing power while writing may lead to data loss and file or CF card corruption. To ensure the system completes writing to flash and closes all files, see "Shutdown" in chapter 1.**

## Universal Serial Bus (USB)

The QuickPanel View/Control has two full-speed USB v1.1 host ports. A variety of third-party USB peripheral devices are available.

Each connected USB device requires a specific driver. The driver supplied with the QuickPanel View/Control is for optional keyboard or mouse support – other devices require the installation of custom driver software.



A list of compatible devices (keyboards, USB mice, compact flash cards, etc.) may be found by visiting the GE Fanuc Support page, accessible from <http://globalcare.gefanuc.com>.

**Note:** These USB ports are defined as maintenance ports and are intended to be temporary connections used for configuration and upload/download of software or data.

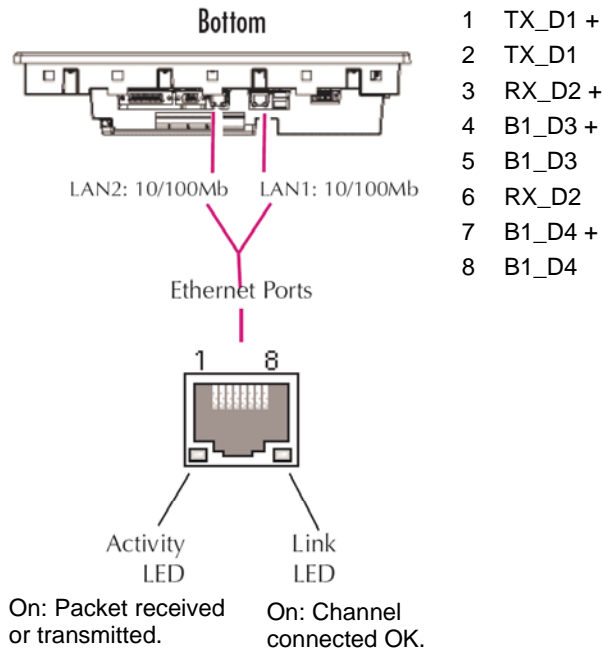
Use of a device in the USB port may compromise CE Mark and UL certifications. Before using an application requiring the use of a USB device, verify that the USB device installed in the QuickPanel View/Control meets the desired agency certifications.

### Warning

**For compliance to UL1604, DO NOT connect or disconnect while power is applied unless the area is known to be nonhazardous.**

### Ethernet

The QuickPanel View/Control is equipped with two 10BaseT/100BaseTX auto-negotiate, full or half duplex Ethernet ports (IEEE802.3). You can connect an Ethernet network cable (unshielded, twisted pair, UTP CAT 5) to the unit via the RJ45 connectors on the bottom of the enclosure. LED indicators on the port indicate channel status. Access to the port is possible either by Windows CE network communications, or by your custom application. The following diagram shows the location, orientation, and pin out of the Ethernet port.



The QuickPanel View/Control provides two methods for setting an IP address:

- **DHCP (Dynamic Host Configuration Protocol).** This is the default method for Port 1 that is carried out automatically.

**Note:** There must be a DHCP server on the connected network for a valid IP address to be assigned. Contact your network administrator to ensure correct DHCP server configuration.

- **Manual method.** This is the default method for Port 2. You uniquely specify the numeric addresses for the QuickPanel View/Control, the Subnet Mask, and the Default Gateway (if applicable).



**Note:** Use a crossover cable to connect the QuickPanel View/Control directly to a PC. When connecting to a LAN HUB, use a straight through cable. Contact your network administrator for further information.

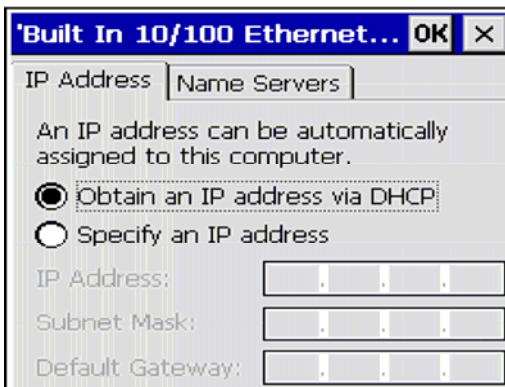
## To set an IP address

1. From the Control Panel, tap  **Network and Dial-up Connections**.


The **Connection** window appears.



2. Select a  connection and choose  Properties. The Built-in Ethernet Port Settings dialog box appears.



3. Select a method:
  - **Obtain an IP address via DHCP** (automatic).
  - **Specify an IP address** (manual).
4. Enter the IP Address, Subnet Mask and Default Gateway numbers obtained from your network administrator (manual method only).
5. Tap **OK**.

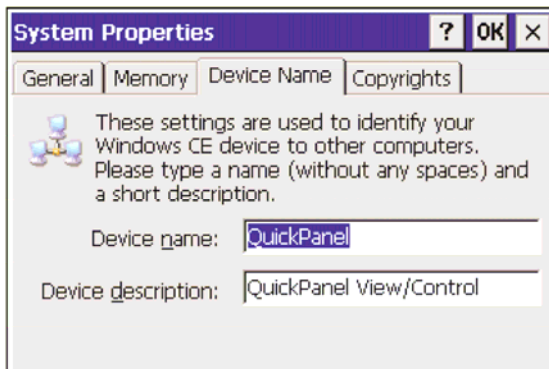
6. To save the settings, run  the **Backup** utility as described in chapter 2.


If the DHCP method was selected, the network server will assign an IP address while the QuickPanel View/Control is initializing. (You must be connected to the network).

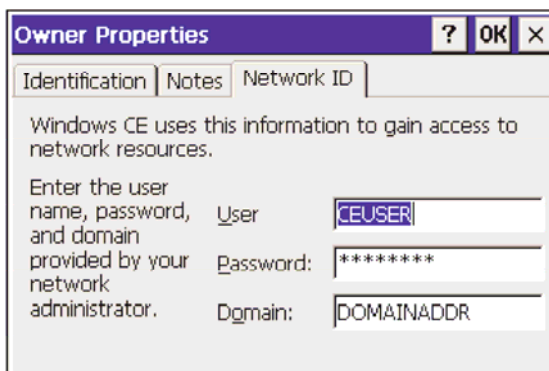
After setting an IP address for the QuickPanel View/Control, you can access any network drives or shared resources for which you have permission.


## To set up access to a Windows network

1. In the Control Panel, double-tap  **System**. The **System Properties** dialog box appears.



2. On the **Device Name** tab, in the **Device name** box, type a unique name for your QuickPanel View/Control. In the **Device description** box, type a description.
3. Tap **OK**.
4. In the Control Panel, double-tap  **Owner**. The **Owner Properties** dialog box appears.



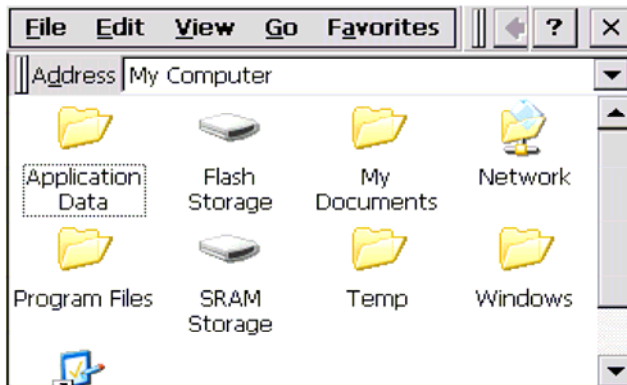
5. On the **Network ID** tab, type your User name, Password and Domain.
6. Tap **OK**.
7. To save the settings, run  the **Backup** utility as described in chapter 2.

Using Windows CE Explorer, you can now access anything on your local network for which you have permission.

## To access a remote resource on a Windows network

1. Start  Windows Explorer.

The **Explorer** window appears.




2. Type in the Address box, or choose from a list, the path to a remote resource.

For example '\\MyRemoteComputer\MyFolder' specifies the folder named 'MyFolder' on a computer with the name 'MyRemoteComputer'.

3. Press ENTER.

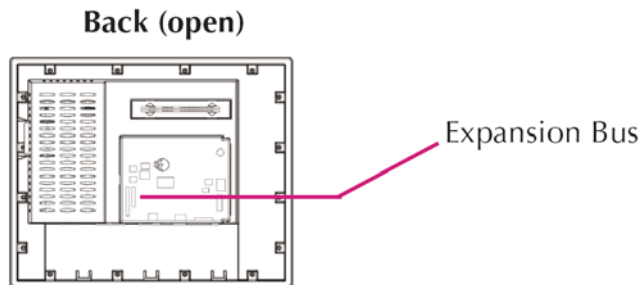
The resource specified is displayed as a collection of files and folders. It can take a few moments to retrieve the data from your local network.

**Note:** You can use the NET command from the shell to map a network resource to the QuickPanel View/Control for frequent access. The resource then appears in the  **Network** folder.

## Expansion Bus

An expansion bus is included with the QuickPanel View/Control, and optional modules that mount directly to it are available. For more information on expansion modules, contact your distributor.

The expansion bus connectors are accessed by opening the back of the unit.



**Note:** To ensure compliance to CE Mark, the mounting screws must be used when installing an expansion card.

### Caution

**Disconnect the AC power from your DC power supply before opening the QuickPanel View/Control. Working on a “live” unit may result in damage to equipment and injury to personnel. Always use anti-static precautions (i.e. grounded wrist strap) when accessing the interior of the unit.**

### Caution

**Ensure all pins are properly aligned when inserting expansion cards. Misalignment could cause damage to the QuickPanel View/Control and/or the expansion card.**

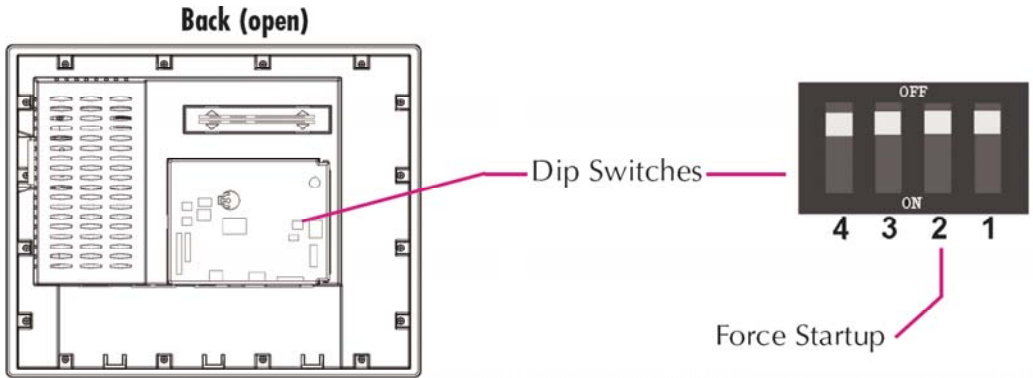
### Caution

**Do not allow conductive material, liquid or solid, to contact the electronics of the QuickPanel.**

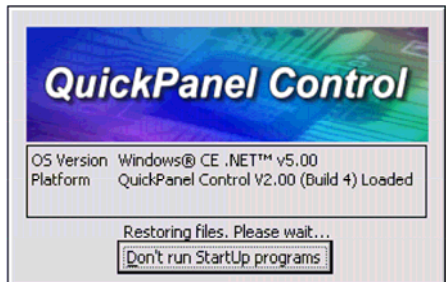
### DIP Switches

The QuickPanel View/Control is equipped with four DIP switches that control separate functions.

DIP switches are set to “OFF” by default in the factory. DIP switch 2 is the Force Startup switch. Turning this switch on forces the startup applications to run when the operating system is started.



When the switch is set to “OFF”, the QuickPanel View/Control operates normally, displaying the startup splash screen. You can skip running the startup applications by tapping the “Don’t run StartUp Programs” button on the startup splash screen.



When the switch is set to “ON”, the startup programs are forced to run and the “Don’t run Startup Programs” button is not available on the startup splash screen.

**Note:** Do not adjust switches other than switch 2. They are reserved for factory functions. Also note that the “Off” position of the switches is toward the DIMM connector, “On” toward the COM1 connector.

### ***To configure startup behavior***

#### **Caution**

**Disconnect the AC power from your DC power supply before opening the QuickPanel View/Control. Working on a “live” unit may result in damage to equipment and injury to personnel. Always use anti-static precautions (i.e. grounded wrist strap) when accessing the interior of the unit.**

#### **Caution**

**Do Not Allow conductive material, liquid or solid, to contact the electronics of the QuickPanel.**

1. Open the back cover of the QuickPanel View/Control.
2. Locate the DIP switches and set DIP switch 2 to “ON”.


The startup applications are now forced.




**Note:** Do not adjust the other switches. They are reserved for factory functions.

## Memory

The QuickPanel View/Control supports a variety of memory subsystems to ensure the requirements of your application are met. All system memory is tied directly to the microprocessor's address and data busses for fastest access. To increase DRAM by up to 64 MB, a 100-pin DIMM memory expansion slot is also included.


### Flash Memory

This 64 MB block of non-volatile memory is the main long-term program storage for the QuickPanel View/Control, operating like a virtual hard drive from the point of view of Windows CE. It is divided into two areas, of which only one is accessible from Windows CE Explorer. The **Flash Storage**  folder represents a 48 MB block of memory available for long-term storage of user application programs. Another 16MB block is used to store the Windows CE operating system, and is not directly accessible from Windows CE Explorer.

The operating system and all user application programs are transferred from Flash to DRAM for execution. Any user additions to the  **Windows** folder are retained in  **Flash Storage** when the  **Backup** utility is run.

FLASH memory has a limited write-cycle lifetime. That is, the physical memory devices wear out after approximately 100,000 cycles (minimum), so it is advisable to limit file operations such as copy, delete, etc.

The write cycle is much slower for FLASH than it is for other portions of RAM, therefore FLASH is not recommended for the storage of program variables, or any data items whose values are dynamic.


Flash memory can optionally be added with a CF Card, which will appear as the  **PCFlash Storage** folder.

**Caution**

**Do not remove power while the system is writing to flash memory, such as when downloading a Proficiency Machine Edition project. Removing power while writing may lead to data loss and file system corruption. To ensure the system completes writing to flash and closes all files, see “Shutdown” in chapter 1.**


***To add Flash memory with a CF Card***

- Insert a Compact Flash card into CF Port (see page 3-23). The unit immediately reads the new secondary storage. If the disk requires formatting, you will be prompted to do so.

New memory appears in Windows CE Explorer as  **PCFlash Storage**.

External flash memory devices are named after their types of connection and order of attachment. For example, if you connect two flash memory devices, one via the CF port and one via the fieldbus connector, the first device connected is named PCFlash Storage, the second PCFlash Storage2. At powerup, a CF port device is recognized and named first. Otherwise name depends on connection order.

***SRAM Memory***

This 512 KB block of static RAM is battery-backed to provide data retention through a power cycle. This memory block is shared by the operating system and user applications. A portion of the SRAM memory operates as a virtual hard drive and is accessible from the Windows CE Explorer. It is represented as the  **SRAM Storage** folder. A typical application program would create a file in this folder and store critical program data in that file.

## ***DRAM Memory***

The QuickPanel View/Control is equipped with 64 MB of dynamic RAM. Part of the DRAM (16 MB) is reserved for the Windows CE operating system and is not accessible by user applications. The other 48 MB is split between two functions: an object store for temporary file storage, and the main memory for running programs.


Typically, compressed programs stored in FLASH are expanded and moved to DRAM for execution. Temporary storage of program variables or data files is also provided by DRAM—any data stored in DRAM will not be retained through a power cycle or reboot.

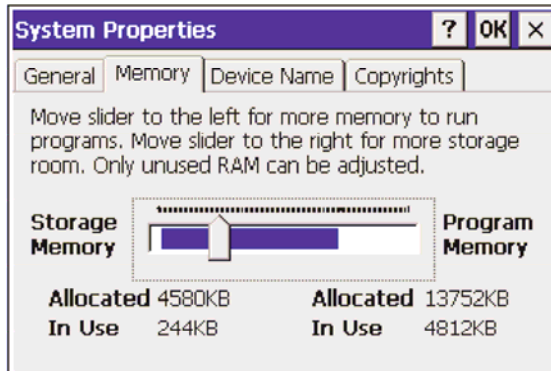
The split between program memory and storage memory may be adjusted as necessary to make more room for one or the other, depending on your specific application needs. For example, if you find that an application is short of memory, use the System Properties dialog box to alter DRAM memory allocation.

### **Caution**

**Setting Program Memory too low may prevent additional applications from starting, or may cause currently running applications to fail due to lack of memory. Setting Storage Memory too low may prevent the saving of files into the object store portion of the file system, which may also cause application failures.**


## To change the DRAM memory allocation

1. In the Control Panel, double-tap  System. The **System Properties** dialog box appears.



2. On the Memory tab, drag the slider to divide the DRAM into Storage and Program memory.

The amount of memory allocated to and used by each area is shown on the dialog box. The amount of memory allocated to and used by each area is displayed numerically. The blue bar indicates the current amount of unallocated DRAM and determines the boundaries within which the slider can move.

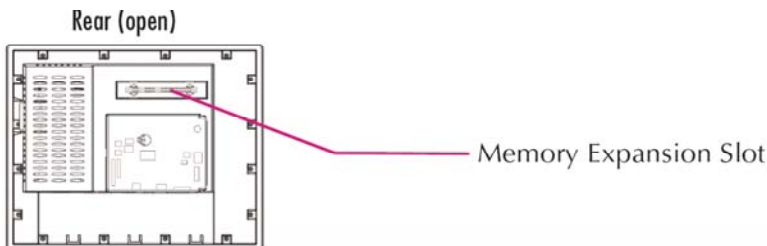
3. Tap OK to apply the new setting.
4. To save the settings, run  the Backup utility as described in chapter 2.

## Boot Loader ROM

The Boot Loader ROM provides 512 KB of non-volatile storage for the QuickPanel View/Control's initialization program. This program configures the QuickPanel View/Control hardware then starts the operating system's execution. This memory is not accessible from Windows CE Explorer, nor should any attempts be made to modify the contents of this ROM.

## Memory Expansion Slot

The QuickPanel View/Control is equipped with a 100-pin DIMM memory expansion slot, which lets you increase DRAM to a total of 128 MB.



### Caution

**Disconnect the AC power from your DC power supply before opening the QuickPanel View/Control. Working on a “live” unit may result in damage to equipment and injury to personnel. Always use anti-static precautions when accessing the interior of the QuickPanel View/Control.**

### Caution


**Do Not Allow conductive material, liquid or solid, to contact the electronics of the QuickPanel.**

## To install additional DRAM

1. Disconnect AC power from the DC supply.
2. With a small screwdriver carefully remove the top rear access cover.
3. Insert the new DIMM carefully into the expansion slot, noting the orientation of the pin locators. When the DIMM is fully seated, lift each side clip until it clicks into place.
4. Snap the access cover back into place.

## *Other Subsystems*

### **Power Management**

The QuickPanel View/Control's Power Properties control panel displays the status of the backup battery. The Battery Very Low Or Missing  icon displays in the taskbar when the battery is either missing or very low.

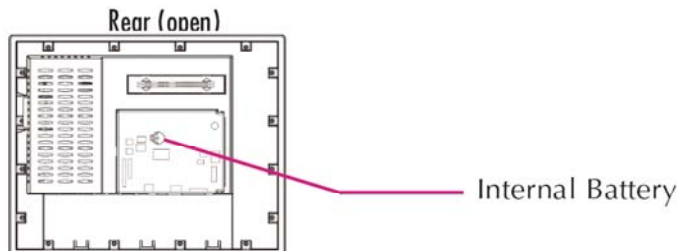
#### ***To access the Power Properties control panel***

1. In the Control Panel, double-tap  Power. The Power Properties dialog box appears.



## Battery Backup

Auxiliary backup power for the real-time clock and SRAM is provided by a **non-rechargeable**, internal lithium battery (+3VDC, BR2032), ensuring that no loss of data occurs when the main DC supply is removed. Backup power is enabled or disabled by installing or removing the battery, accessed via the rear panel as shown in the following illustration.



### Caution

**Disconnect the AC power from your DC power supply before opening the QuickPanel View/Control. Working on a “live” unit may result in damage to equipment and injury to personnel. Always use anti-static precautions when accessing the interior of the QuickPanel View/Control.**

### Caution

**Do not allow conductive material, liquid or solid, to contact the electronics of the QuickPanel.**

***To remove the internal battery***

1. Disconnect AC power from the DC supply.
2. Open the rear access panel.
3. Release the battery by *gently* lifting it from the completely exposed side, past the small protrusions. To avoid breaking the battery retainer clips, do not apply excessive upward pressure.
4. Slide the battery out of its carrier, noting the arrow on the carrier indicating the direction of removal.

***To install a new battery***

1. Disconnect power from the DC supply.
2. Open the rear access panel.

**Note:** Battery must be installed with positive ( + ) side up.

3. To install the battery, insert one side of battery into upper side of battery clip, then press other side into clip until snaps into place.

**Warning**

**Replace battery with Panasonic BR2032 only. Use of another battery may present a risk of fire or explosion.**


**Warning**

**Battery may explode if mistreated. Do not recharge, disassemble or dispose of in fire.**

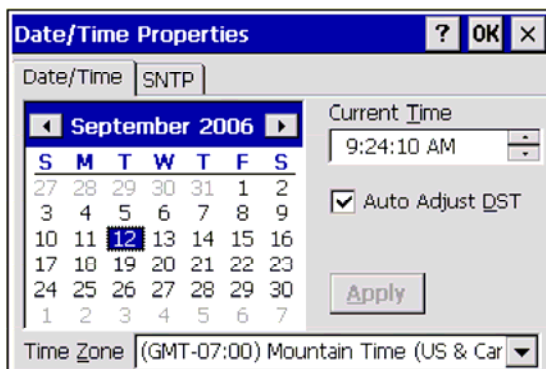
## Real-time Clock

The QuickPanel View/Control has a programmable real-time clock capable of reporting the current time in Year/Month/Day/Hour/Minute/Second. The time is set from the Windows CE interface and retained through a power cycle if battery backup is available. Daylight saving time is enabled by a check box within the dialog box. The time can be displayed in the system tray on the task bar.

### To set the real-time clock


1. In the Control Panel, double-tap  Date/Time.

The **Date/Time Properties** dialog box appears.






**Note:** Tap **Apply** after making changes in any box.

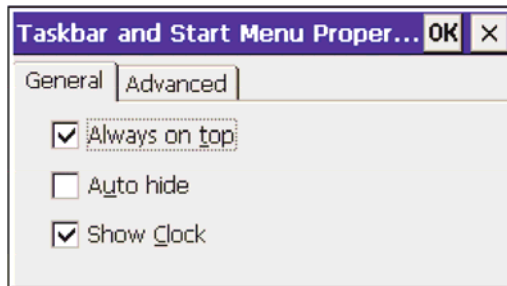
2. To modify the date, select the Date/Time tab.
3. Tap the year to choose a new year; tap the month to choose a new month.
4. Tap a date to specify the day of month.
5. From the **Time Zone** box, choose your zone.
6. Select **Auto Adjust DST** to configure the clock to automatically compensate for daylight savings time.
7. In the **Current Time** box, adjust the hours, minutes and seconds.
8. Tap **OK** to finish.

9. To save the settings, run  the **Backup** utility as described in chapter 2.

### ***To display the time on the taskbar***

1. From the  Start menu, choose  Settings and then  Taskbar and Start Menu Properties.

The **Taskbar Properties** dialog box appears.



1. On the Taskbar Options tab, select Show Clock.
2. Tap OK.

An hours and minutes display now appears in the taskbar.



## **Configuring SNTP**

There are two levels of Network Time Protocol (NTP) time servers available on the Internet.


First-level time servers are primarily intended to act as source time servers for second-level time servers. First-level time servers may also be capable of providing mission-critical time services. Some first-level time servers may have a restricted access policy.

Second-level time servers are intended for general SNTP time service needs and usually enable public access. It is recommended that you use second-level time servers for normal SNTP time server configuration because they are normally located on a closer network that can produce faster updates.


It is recommended that you research any time server selection to ensure that it can meet your specific time server requirements. More information and a list of SNTP time servers can be found at <http://support.microsoft.com/kb/262680/>.

If the time on the time server is more than the threshold value away from the current time on the QuickPanel View/Control, then the time is not updated. Setting the Threshold to 0 tells the utility to always accept the time from the server. This setting would be useful in a case where the backup battery has died and the QuickPanel View/Control was power cycled, since the internal clock would have reset back to January 1, 1980 12:00 am.

### To set SNTP

1. In the Control Panel, double-tap  Date/Time.  
The **Date/Time Properties** dialog box appears.



- Note:** Tap **Update Now** after making changes in any box.
2. To add or modify SNTP settings, select the SNTP tab.
  3. To enable SNTP, ensure the **Enable SNTP** check box is selected.
  4. Enter the time server name in the **Server(s)** field.
  5. Set the **Refresh**, **Retry**, and **Threshold** parameters.
  6. Tap **Update Now** to update SNTP settings immediately.
  7. Tap **OK** to finish.
  8. To save the settings, run  the Backup utility as described in chapter 2.

*Design Specifications*

The specifications listed in this appendix are the design goals for the QuickPanel View/Control. In most cases the “as built” or tested specifications are identical. See page A-6 for a list of agency approvals for environmental service and safety.

*Physical*

Enclosure dimensions (actual – see “Getting Started” in chapter 1 for cutout dimensions)	Height: 11.968 in (304.0 mm) Width: 14.855 in (377.3 mm) Depth: 2.782in (70.7 mm)
Bezel dimensions	Height: 12.725 in (323.2 mm) Width: 15.7 in. (398.8mm) Depth: 0.4 in (10.2 mm)
Weight	10.3 lb (4.67 kg)

*DC Power*

Input Voltage	9.6 to 28.8 VDC
Power Dip Tolerance	-30% nominal input voltage, 10msec.
Insulation Resistance	>300Mohm @ 1000V frame ground to 0V >300Mohm @ 1000V frame ground to 24V
Real Power	48 W
Power Supply Conductor Size	12 to 18 AWG For compliance to CE Mark, the isolated frame ground must be connected. Recommended frame ground connection is via the shortest possible route, using 14 AWG.
Connector (Vendor, p/n)	Phoenix Contact, 1777992 <b>Note:</b> The torque range for the attaching screws is 4 to 6 inch/lbs.

*Display*

Size	15" 38.1 cm (diagonal)
Colors	65,536 (16 bits/pixel)
Resolution	1024 x 768 pixels
Fabrication	TFT
Backlight	Cold Cathode Fluorescent (CCFL) -rated half life: 40,000 hours. <b>Note:</b> Backlight is not field replaceable.
Luminance	500 NITS

*Front Panel*

Bezel Material	Valox 3706 For material specifications, visit <a href="http://www.gepolymerland.com">www.gepolymerland.com</a>
Membrane Material	Touch Screen Top Layer PET Polyester
LEDs	
Bottom	Power status indicator (green with power applied, flashes amber if both backlights fail)
Top	Programmable tri-color (green, red, amber)

*Touch Screen*

Type	Resistive, 12 bit
Resolution	X axis-1024 cells Y axis – 768 cells (after calibration)

*CPU*

Processor	XScale PXA255
Clock speed	400 MHz

## Memory

Flash	64 MB
SRAM	512 KB (Power off retention is the life of the battery)
DRAM	64 MB
ROM	512 KB (Boot loader)

## Memory Expansion Slot

Form Factor	100 pin DIMM
Memory Type	SDRAM
Maximum DRAM	64 MB
Maximum Devices/Module	4
Bus Width	32 bits
Bus Speed	100 MHz or faster
Voltage	3.3 VDC
CAS Latency	CL=3
Refresh Type	Self
Refresh Cycle Time	64 ms maximum
Error Correction	Non-ECC
Error Detection	No parity
Buffering	None
Device Row Addressing	12 Address Lines (A0 to A11)

## Expansion Ports

Compact Flash Memory	One slot (Type I/II), supports 3.3v and 5v cards
FieldBus	One slot
Universal Serial Bus (USB) (2)	V1.1 compatible

## Communication Ports

Ethernet (x 2)	IEEE 802.3 10 BaseT/100 Base TX Auto-negotiate Full or half duplex RJ45 connectors Two status LEDs per connector Maximum cable length: 100m
Serial COM1 Speed Mounting hardware Fuse	EIA232C/EIA485, DP25S (female) 300 bps -115200 bps M2.6 jackscrew 1.0A, 125V fast blow cartridge type Littlefuse part #154001
Serial COM2 Speed Mounting hardware	EIA232C, DP9P (male) 300 bps -115200 bps #4-40 screw

## *Environmental*

Operating Temperature*	32°F to 122°F (0°C to 50°C)
Operating Humidity	10% to 85% RH (non-condensing) at less than 50°C; maximum 50% RH at greater than 50°C
Storage Temperature*	-4 to 140°F -20 to 60°C
Storage Humidity	10% to 85% RH (non-condensing) at less than 50°C; maximum 50% RH at greater than 50°C
NEMA Rating	4 and 4x when mounted in a comparably rated NEMA panel (NEMA 4 is approximately equivalent to IP66; visit <a href="http://www.nema.org">www.nema.org</a> )
Operational Vibration	IEC 60068-2-6 10 -57Hz, 0.012" peak to peak displacement 57 -500Hz, 1.0g acceleration
Operational Shock	IEC 60068-2-27 15g, 11ms (sine wave)

\* Rated temperature limits refer to the ambient air temperature immediately surrounding (less than 3" or 7.6 cm) the QuickPanel inside the enclosure in which the QuickPanel is mounted. Additional provisions for remaining within the stated limits must be considered where additional, external thermal loads are imposed on the QuickPanel. These could include large heat producing motor drives, or power supplies in the same cabinet or in outdoor applications involving direct sun exposure.

## *Battery*

Type Life (Approximate)	Panasonic BR2032 (3V, 190mAh, lithium) 5 years
-------------------------	--

## *Calendar/Clock*

Resolution	1 second
Accuracy	±2 to 3 minutes per month
Retention	Life of battery

## Agency Approvals

Model number: ES1522

The QuickPanel View/Control is intended for industrial environments and when properly installed shall comply with the following agency approvals.

<b>Description</b>	<b>Agency Standard or Marking</b>	<b>Comments</b>
North American Safety for Hazardous Locations Class I, Div. 2, Groups A, B, C, D	UL 1604/C-UL	Certification by Underwriter's Laboratories to UL standard and equivalent CSA standard
Explosive Atmospheres Directive European Safety for Hazardous Locations Equipment Group II, Category 3	ATEX (when mounted in an IP66 enclosure)	Certification in accordance with European directives; refer to Declaration of Conformity.
Low Voltage Directive European Safety for Industrial Control Equipment	CE	Certification in accordance with European directives; refer to Declaration of Conformity
Electromagnetic Compatibility Directive European EMC for Industrial Control Equipment	CE	Certification in accordance with European directives; refer to Declaration of Conformity

The agency approvals listed above and on the Declaration of Conformities are believed to be accurate; however, a product's agency approvals should be verified by the marking on the unit itself.

# Appendix *B*

## *Diagnostics*

---

---

The tables contained in this appendix can be used to identify and remedy problems that can occur with the 15" QuickPanel View and QuickPanel Control products.

### *Power up*

<b><i>Problem</i></b>	<b><i>Suggested remedy</i></b>
Blank screen	<b>No power:</b> Check all power connections to the QuickPanel CE. <b>Backlight failed:</b> This is further indicated when the bottom LED glows amber. The LED will only light if both top and bottom backlights have failed. <b>Backlight timer expired:</b> Touch the screen to reactivate.

### *Pocket Internet Explorer*

<b><i>Problem</i></b>	<b><i>Suggested remedy</i></b>
Cannot access any URLs when using a dial-up connection to an ISP.	If you have previously set up an IP address on a local Ethernet Network, it must be cleared. Disconnect your Ethernet cable and reboot. Your ISP will reassign an IP address when you reconnect the cable.

## *Physical Unit*

### **Problem**

Slow or sluggish touch response.

### **Suggested remedy**

Ensure that configured I/O or communications channels such as serial or Ethernet are operating without error. These errors can cause higher system overhead leading to delayed response to touch inputs.

Ensure that flash drives, internal or external, are operating without error. If the flash drives are highly fragmented or corrupted, reads and writes to the drive can experience significant delays leading to delayed response to touch inputs. Corrupted external flash drives may be corrected with Storage Manager. See “Storage Manager” in chapter 3.

### **Problem**

After adding expansion memory in the DIMM connector, the system won't boot, or if it does boot, an error message is displayed.

### **Suggested remedy**

When the system is first started, observe the screen to notice any memory error messages from the boot loader. If any messages appear, such as “DIMM not 12 row”, “DIMM not 32 bit”, “DIMM refresh unsupported”, power down the system and remove the memory module. If the error message is displayed from the Windows CE desktop, also power down the system and remove the memory module. For proper operation, expansion memory modules must meet the requirements stated in the Design Specifications.

## A

Agency approvals, A-6

## B

Backup, 2-10  
Basic setup, 1-2  
Battery  
    removing, 3-42  
    specifications, A-5  
Battery backup, 3-41  
Block diagram, 2-4  
Boot loader ROM, 3-38

## C

Calendar/clock  
    specifications, A-5  
CF card  
    copying a project to, 2-15  
CF port  
    operation, 3-23  
Clock  
    operation, 3-43  
    setting, 3-43  
Communication ports  
    operation, 3-11  
    specifications, A-4  
CPU  
    specifications, A-2  
Cutout, panel, 1-6

## D

Diagnostics, B-1  
Dial-up connection  
    configuring, 2-7  
Dimensions  
    bezel, A-1  
    module, A-1  
    panel cutout, 1-6  
DIP Switches, 3-33

Display  
    operation, 3-2  
    specifications, A-2  
DRAM, 3-37  
    adding, 3-39

## E

Emulate PPC, 2-16  
Environmental requirements, A-5  
Ethernet ports  
    operation, 3-25  
Expansion bus, 3-32  
Expansion memory  
    diagnostics, B-2  
Expansion ports  
    specifications, A-3

## F

Firmware updates, 1-10  
Flash memory  
    adding, 3-36  
    operation, 3-35  
Front panel  
    specifications, A-2  
FTP Server, 2-19

## G

Getting started, 1-2

## H

HTTP File Transfer Utility, 2-17

## I

IP address  
    setting, 3-27

# Index

---

## L

- LAN connection
  - configuring, 2-8
- Layout diagram, 2-2

## M

- Machine Edition project
  - updating, 2-16
- Memory, 3-35
  - specifications, A-3
- Memory expansion slot
  - specifications, A-3
- Memory expansion Slot, 3-39
- Microsoft File Viewers, 2-14

## O

- Operating system, 2-5

## P

- Panel cutout, 1-6
- Physical unit
  - diagnostics, B-2
- Pocket Internet Explorer, 2-7
  - diagnostics, B-1
- Power management, 3-40
- Power requirements, A-1
- Power supply
  - connecting, 1-3
- Power up
  - diagnostics, B-1
- Proxy server
  - configuring, 2-9

## R

- Reboot, 2-11
- Remote resource
  - accessing on a Windows network, 3-31
- Runtime setup, 1-4

## S

- Shutdown, 1-5
- SNTP
  - setting, 3-45
- Software, 2-5
- Specifications, A-1
- SRAM memory, 3-36
- Startup behavior
  - configuring, 3-34
- Storage Manager, 2-12
- System Information, 2-13

## T

- Technical support, 1-9
- Touch response
  - diagnostics, B-2
- Touch Screen Display
  - operation, 3-2
- Troubleshooting, B-1

## U

- USB port
  - operation, 3-24

## W

- Windows network
  - access, 3-29