



Proficy* Change Management and Proficy* Machine Edition

Proficy Change Management provides the functionality to manage and maintain programs and projects in a manufacturing environment. Using Version Control, Security, Audit Trailing, and scheduled verifications, you can get a handle on what's happening in your plant.

Using Change Management provides the ability to increase plant uptime by ensuring backups are available in the event of an emergency, and by helping prevent user errors. It can also help meet regulatory requirements by providing security and detailed auditing. Improve safety and maintain product quality by ensuring that unauthorized changes to control programs are tracked and detected before they become a problem.

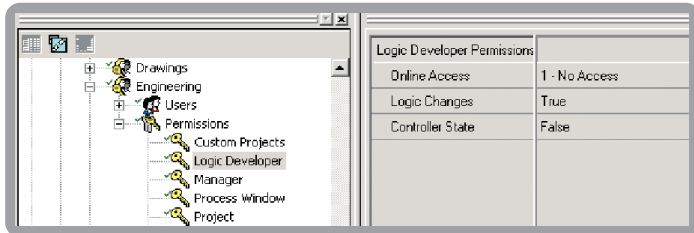
Because Proficy Change Management and Proficy Machine Edition are built on the same technology, the combination provides a more comprehensive solution. Proficy Change Management automatically supports any Machine Edition based product. This includes Proficy Logic Developer, Proficy Motion Developer, and Proficy View.

In addition to the standard functionality, Proficy Change Management offers detailed security and Audit Trailing for Machine Edition components.

Security

Proficy Logic Developer users get detailed security settings that allow control over what functions each user or group of users is allowed to perform on the controllers. These include:

Online Access – This can be configured for “No Access”, “Monitor Only”, “Data Changes”, or full access.



Logic Changes – Control whether or not the current user is allowed to edit the logic portion of the control.

Controller State – Control whether the user can start/stop the controller. In addition to these permissions, there are several general Machine Edition permissions that allow you to control the common project functions.

Edit Project – this permission controls what level of changes a user can perform on the offline files, and can be set to “Read Only”, “Edit Documentation”, or “Full Access”.

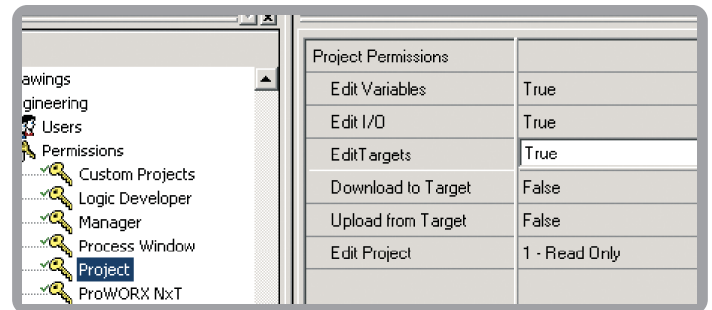
Edit Variables – Allows you to control whether or not the user is allowed to edit the variable lists. (i.e. Add, create or delete)

Edit I/O – Whether or not the user can modify the I/O configuration for the project

Edit Targets – Whether or not the user can change, insert or delete targets (i.e. PLCs) from a project.

Download to Target – Whether or not the user is allowed to download to a device

Upload from Target – Whether or not the user is allowed to read from the device.



Proficy Change Management and Proficy Machine Edition

Audit Trails

Proficy Change Management will also track changes to Machine Edition projects as they are made and record them to the Audit Trail. By default as projects are checked out, opened, checked in, etc. the audit trail will log the Date, Time, User, project, action, and any comments. Some of the modules will actually provide more details on changes. This allows the system to record what the user was doing while editing the project. Some core information is recorded for all products, and some is specific to each module.

Variable Changes – Database changes are audited. This includes tag creation, deletion or attribute changes.

I/O Changes – Changes to the I/O Configuration are logged. (Proficy Logic Developer PC Only)

Documentation Changes – Changes made to logic documentation is recorded in the audit trail (Proficy Logic Developer PC Only)

Online Data Changes – Changes made to data registers online are recorded to the audit trail system. (Proficy Logic Developer PC Only)

Online Force Changes – Any online forces are logged to the audit trail. (Proficy Logic Developer PC Only)

Download – Logs when a user downloads a project to a target (Proficy Logic Developer, Proficy Motion Developer, Proficy View, etc)

Proficy Logic Developer PC

With the Proficy Logic Developer PC product, Proficy Change Management will record detailed changes to the audit trail. This includes tracking of Logic Changes (i.e. Rung 5 inserted), Bookmarks, and controller parameters.

Scheduled Compare and Upload

Use the Proficy Change Management Scheduler to ensure that the logic and data in your controller matches the master version on the server. The Scheduler allows you create events that will run automatically on a regular basis and allows you to read the PLC, compare against the master, and backup any changes in the PLC automatically. It can also be configured to notify you via email that a difference has been found, so you can identify unexpected changes before they become a problem.

Proficy Software Modules:

Real-Time Information Portal
[Proficy Real-Time Information Portal](#)

Plant Performance and Execution
[Proficy Efficiency](#)
[Proficy Production](#)
[Proficy Tracker](#)
[Proficy Machine Tool Efficiency](#)

Integrated Quality
[Proficy Quality](#)
[Proficy Non Conformance Reporting](#)
[Proficy Shop Floor SPC](#)

Process Solutions
[Proficy Process Systems*](#)
[Proficy Batch Execution](#)
[Proficy Batch Analysis](#)
[Proficy RX™](#)

GE Fanuc Support & Services:

GE Fanuc Intelligent Platforms Information Centers

Americas:
1 800 GE FANUC or 434 978 5100

Asia Pacific:
86 21 3222 4555

Europe, Middle East and Africa:
800 1 GE FANUC or 800 1 4332682
or 1 780 401 7717

Europe, Middle East and Africa (CNC):
352 727979 1

©2007 GE Fanuc Intelligent Platforms, Inc. All Rights Reserved.
*Trademark of GE Fanuc Intelligent Platforms, Inc.
All other brands or names are property of their respective holders.

Centralized Toolchest

Proficy Change Management provides version control and central storage of the Toolchest. This ensures that any custom blocks, instructions, and other library information that users create can be version controlled, and stored on the server to ensure everyone is using the same version of the toolchest objects.

Up Front Management

Proficy Change Management and Machine Edition provides a more pro-active approach to managing changes to GE PLCs and other Machine Edition components. ME is automatically locked down when configured to work with Proficy Change Management. It does not allow a user to run the Proficy Logic Developer editor without logging into the Proficy Change Management Server. As a result, it is not likely that anyone can make a change to the PLC without the system knowing about it. Rather than finding out after the fact using the scheduler, the system will know about it as it happens.

Plant Data Repository
[Proficy Historian](#)

Asset Management
[Proficy Remote Monitoring & Diagnostic](#)
[Proficy Change Management](#)

HMI / SCADA
[Proficy HMI/SCADA – iFIX*](#)
[Proficy HMI/SCADA – CIMPLICITY*](#)
[Proficy View – Machine Edition](#)

Programming & Control
[Proficy Logic Developer](#)
[Proficy Motion Developer – Machine Edition](#)

[GlobalCare Support](#)
[Professional Services](#)
[Training](#)

Additional Resources

For more information, please visit the GE Fanuc web site at:

www.gefanuc.com

