

# ***CIMPLICITY® Machine Edition Logic Developer-PC***

**Industry Leading PC-based Control Software.** Logic Developer-PC provides the most advanced set of programming tools on the market today and includes CIMPLICITY® Machine Edition View, a fully integrated HMI providing a tightly integrated environment for control and animation. With support for all 5 IEC 61131-3 languages, the ability to create user-defined instructions, and support for a wide variety of I/O systems, Logic Developer-PC provides the perfect environment for your next control application. Logic Developer-PC runs on a wide variety of platforms including Windows® NT/2000/XP, Embedded NT, VenturCom's Hard Real-time kernel, and GE Fanuc's QuickPanel™ Control (Windows CE) devices — all sharing the same instruction set and programming languages, providing complete scalability between these platforms. Logic Developer-PC includes everything you need to configure, program, commission, and maintain your applications for your full project lifecycle.

## ***Product Features***

**Configure.** Logic Developer-PC supports a wide variety of I/O systems, including all popular open I/O and PLC systems like GE Fanuc Genius®, Series 90™-30 and Ethernet Global Data, Profibus™, Allen-Bradley RIO, DeviceNet™, Interbus-S™, Modicon/Schneider Electric Modbus® Plus, Quantum/800 Series I/O and Modbus TCP/IP, Modbus Slave, and more. Check our website for a full list.

**Program.** Logic Developer-PC provides you with a full set of IEC 61131-3 programming languages, including Ladder Diagram, Structured Text, Instruction List, Function Block Diagram, and Sequential Function Chart. In addition, it supports user-defined function blocks, which lets you develop and maintain code in one place, but use it multiple times within and across your applications.

**Commission.** Logic Developer-PC includes a complete set of on-line development tools to aid you in commissioning your application. Tools such as true on-line editing and "Run Mode Store" allow you to modify or tune your application in real-time without stopping the process. Data monitoring tools such as the Data Watch and Data Trend charts provide a window into your application to allow you to see exactly what's happening.

**Maintain.** Logic Developer-PC provides you with a complete set of tools to assist you in maintaining your applications. Extensive diagnostics, remote programming and debugging, and thin-client publishing of logic and data are only a few of the functions available.



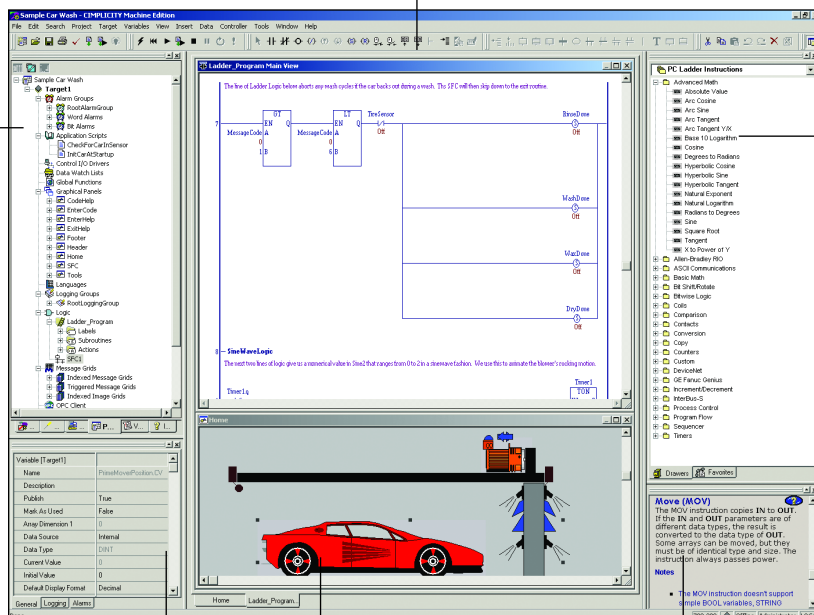
**Toolchest.** Build applications rapidly with preconfigured objects from the Toolchest, a storage system for managing graphical and control objects. When developing a program, simply click on the object you want and drag it to your logic. When you need to update the object, just update the version in the Toolchest, and all projects that use that object will automatically be updated the next time they are downloaded or validated.

**Fully Integrated HMI.** Logic Developer-PC works seamlessly with the fully integrated CIMPLICITY Machine Edition View product, giving you the power of alarming, scripting, data logging, and recipe management. With the fully configured Web Server, you can view and control your plant using a standard Web browser.

**CIMPLICITY Machine Edition.** Logic Developer-PC is the PC control component of CIMPLICITY Machine Edition, a state-of-the-art suite of tools geared to machine and process industries. It incorporates a unique, "single user" interface, hosting several development and runtime engines within a common environment. Graphical interface, PC-based control, motion, and PLC programming are just a few of the components included. OEMs, production facilities, and process plants can all reap the benefits of CIMPLICITY Machine Edition.

Build, edit, and document your logic in any combination of the IEC 61131-3 languages, then drag variables to the HMI panel to automatically associate them with the appropriate animation.

All the elements in your project are mapped in a single tree. Click an element to open it; right click for a menu of things you can do with it.



Just drag instructions (and other elements you need for your application) from the Toolchest into logic. It also holds common logic sequences along with their associated HMI animations and variables, and stores your work for later retrieval and reuse.

Use the properties inspector to define the attributes of any object.

Build and edit HMI animations as you develop control logic, using objects defined in the Toolchest.

The interactive Companion gives you advice and explanations as you work.

### GE Fanuc Automation Information Centers

### Additional Resources

USA and the Americas: 1-800-GE FANUC  
or (434) 978-5100

Europe, Middle East and Africa: (352) 727979-1

Asia Pacific: 86-21-3222-4555

For detailed technical specifications and product ordering information, please visit the GE Fanuc website at:

[www.gefanuc.com](http://www.gefanuc.com)



© 2004 GE Fanuc Automation, Inc. All Rights Reserved. CIMPLICITY and Genius are registered trademarks and Series 90 and QuickPanel are trademarks of GE Fanuc Automation, Inc. Profibus is a trademark of Profibus International. DeviceNet is a trademark of the Open DeviceNet Vendor Association. Windows is a registered trademark of Microsoft Corporation. Interbus-S is a trademark of Phoenix Contact. Modbus is a registered trademark of Schneider Automation, Inc. All other trademarks are the property of their respective owners.